

ARTISI





Contents

4

WELCOME TO ARTISI

12

THE MASTERPLAN

22

THE TEAM

24

HAMMERSMITH SOUL

36

THE APARTMENTS

56

THE FLOORPLANS

Welcome to Artisi



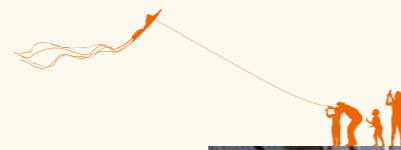
Introducing Artisi, an intimate collection of thoughtfully curated apartments set within the vibrant, dynamic backdrop of the historic Hammersmith & Fulham Town Hall where the Civic Campus, designed by world-renowned architects RSHP, is coming to life.

Artisi embraces the spirit of Hammersmith, offering the opportunity to live at the heart of this diverse and rich community.



London heart.

Hammersmith soul.



Hammersmith is a place of energy, of art and culture; a place where creativity, expression and dynamism flourishes.

Rooted in its eclectic history, yet moulded by its modern vibrance, Hammersmith's natural soul creates a uniquely diverse and exciting community.

Ravenscourt Park

Westfield Shopping Centre

Brook Green

Ravenscourt Park tube station

Kensington Olympia

Notting Hill

Holland Park

Furnivall Gardens

Knightsbridge

Hyde Park

The West End

The City

The Shard

Hammersmith Bridge

Earl's Court

Chelsea

Barnes South



West London living



Artisi places you at the beating heart of West London, where this energetic and culture-rich part of the city is there for you to explore.

In less than ten minutes you can be sipping cocktails at the bar in the famous Lyric Theatre or enjoying the views along the banks of the Thames. A twenty minute walk will bring you to the delightful Chiswick boutiques or the bustling Shepherd's Bush market.

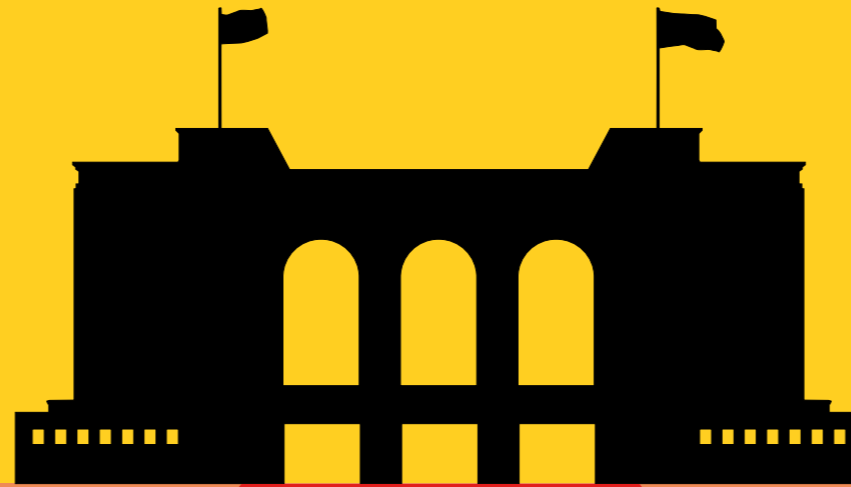
The masterplan



On the site of the historic Hammersmith Town Hall, a pioneering new place is taking shape.

The bold Civic Campus vision by London Borough of Hammersmith & Fulham, brought to life by award-winning architects RSHP, will return the historic town hall building to the heart of Hammersmith and deliver thoughtfully designed homes, dynamic workspace, vibrant new retail opportunities for local businesses and engaging recreation and public spaces to inspire and enrich the whole community.

Civic Campus is a symbol of inspiration and aspiration; a world-class destination that represents a big vision for everyone within, and beyond, our community.





Civic Campus at dusk

CGIs are indicative only. Final specification subject to change.

The vision



Centred around the restoration of the iconic Grade II listed town hall to its former glory, a vibrant and inspiring entertainment, arts, business, education and social destination is being created; one which engages and integrates with the city and the people that live there.

Civic Campus features world-class architecture and design for the future; its 'Zero Harm' design approach sets new benchmarks for accessibility, while the use of new technology, such as ground source heat pumps to provide low-carbon heating for the scheme, is just one of the forward-thinking sustainability features that set a precedent for future developments.

A new cinema, performance venues, gallery space and public art programme celebrate the area's heritage as an arts and culture centre, while creating opportunities for Civic Campus to become one of the country's most popular destinations for people to participate in and enjoy the arts.

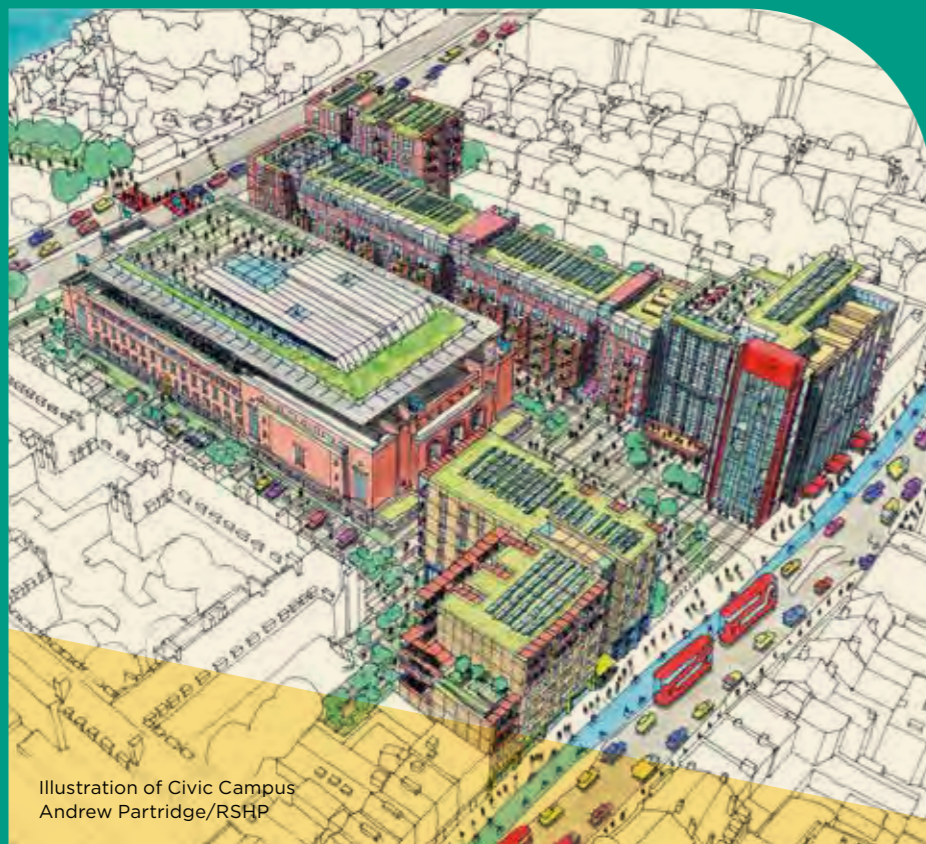


Illustration of Civic Campus
Andrew Partridge/RSHP

Hammersmith Town Hall
RSHP



CGIs are indicative only.
Final specification subject to change.

The transformation



Celebrating Hammersmith's rich cultural heritage, Civic Campus will breathe life back into this historic location, creating a new and vibrant destination abundant with opportunities for better living, entertainment, education and play.

This is Civic Campus; transforming the heart of Hammersmith for the 21st Century.



Civic Avenue
RSHP



Concert hall in the Town Hall
RSHP



MUSIC FOR THE SOUL

The new concert and theatre hall with bar and outdoor balcony is just one of many exciting new spaces to enjoy music and the arts, most of which are also available for private event hire.

The Piazza
RSHP



LIGHTS, CAMERA, ACTION

The new boutique five-screen cinema will show an exciting selection of art-house and blockbuster movies for all ages to enjoy, in the welcoming surrounds of a public outdoor piazza with food and drink venues.



DRINK AND DINE

Whether it's a morning coffee, alfresco dining with friends or an evening cocktail with river views you desire, Civic Campus has an option for every mood and time of day.



GROW AND INSPIRE

With its innovative and flexible design that encourages enterprise and growth both today and into the future, Civic Campus will become home to a range of local start-up and entrepreneurial businesses, while providing art studios for creative businesses and study space for young people.



Morning coffee on Unity Square



THE PIAZZA

'Unity Square', the expansive public outdoor piazza designed by world-renowned landscape architects Gillespies, promises to bring Civic Campus to life with its inclusive seating, staging area for performances and events, café seating areas and welcoming spaces for community daily enjoyment. Unity Square also provides improved pedestrian links to Furnivall Gardens and the Thames riverfront.

Whether it's Wimbledon in summer, music and comedy festivals or a weekly produce market, a curated programme of events ensures this beautiful outdoor square will be the beating heart for residents and visitors alike.



SUSTAINABILITY

The forward-thinking vision and design approach to Civic Campus is evident throughout the scheme; sustainable buildings that minimise our carbon footprint and cut fuel bills.

This environmentally positive scheme supports people and is responsible with cutting-edge technology such as its innovative ground source heat pump, solar panels, 'fabric first' approach to design, blue and green sedum roofs, rainwater reuse and sustainable drainage and smart lighting.

Overall the development will have 'excellent' BREEAM status. Taken alone, the Town Hall achieves a 'very good' BREEAM status — a huge achievement for a listed building.

CGIs are indicative only. Final specification subject to change.

Great minds. Thinking alike.



Melbourne Metro

RSHP



RSHP — LEAD DESIGNER AND ARCHITECT

RSHP is an award-winning, 180-strong architectural practice, operating globally. The practice's architecture responds to social, environmental and economic challenges alike, shaping the way people engage with place and, in turn, the planet. With an impressive track record internationally the practice has also designed iconic projects across London such as Maggie's West London Centre, The Leadenhall Building, and Riverlight.



The Leadenhall Building and Lloyd's of London
RSHP



Keybridge

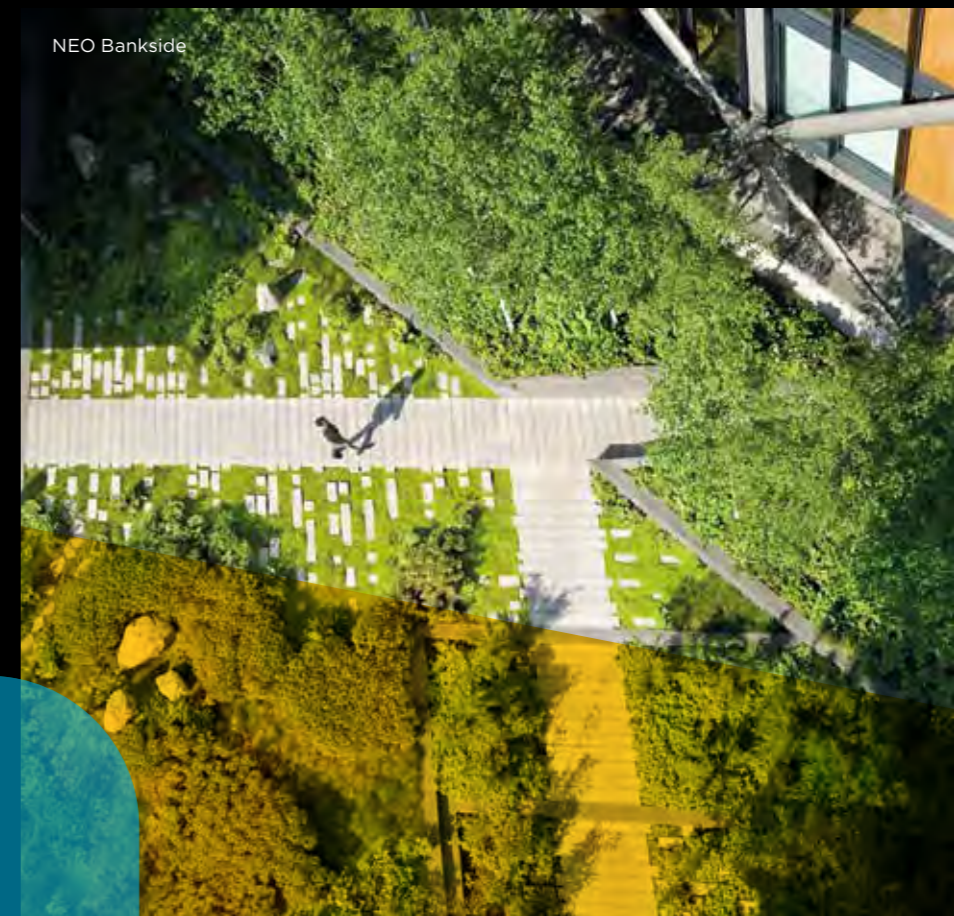
GILLESPIES



GILLESPIES — LANDSCAPING

As the landscape architect for Civic Campus, Gillespies has brought the public realm, gardens and roof terraces to life. Gillespies pride themselves on delivering responsibly designed and transformative spaces that focus on creating well-being and sense of place.

This award-winning practice has worked on projects such as Television Centre, NEO Bankside and Elephant Park.



NEO Bankside

DARLING ASSOCIATES ARCHITECTS



DARLING ASSOCIATES — INTERIOR ARCHITECT

Darling Associates worked tirelessly on the interior specification of the residential apartments to pay tribute to the beautiful RSHP architecture. They are a multi award-winning architectural studio that believes in elegance of design, accuracy in detailing and the inherent beauty of natural materials. They have earned a reputation for their experience in being able to deliver large-scale projects across the world.

Hammersmith soul



A famously vibrant and diverse part of London that knows how to put on a live gig, Hammersmith has a rhythm to its soul.



Rowing clubs by Hammersmith Bridge



London living.

Camille Walala commission



Furnivall Gardens



Hammersmith style.

Riverside life.



Incredible neighbours.

RESTAURANTS

- 1 Alma
- 2 Blanche Eatery
- 3 High Road House
- 4 La Petite Bretagne
- 5 Los Molinos
- 6 Lyric Bar & Grill
- 7 No.197 Chiswick Fire Station
- 8 Riverside Studios
- 9 The Curtains Up
- 10 The River Café
- 11 The Suzu House
- 12 Wagamamas
- 13 What the Fish
- 14 La Picolla

SHOPPING

- 1 Broadway Shopping Centre
- 2 City and Country Farmers Market
- 3 Hammersmith Natural
- 4 Hammersmith Street Market
- 5 IKEA
- 6 Kings Mall
- 7 Turners Florists
- 8 Westfield

BARS

- 1 Brackenbury Wine Rooms
- 2 Kindred
- 3 Smith's Cocktail Bar
- 4 Soho House White City
- 5 The Distillers
- 6 The Hoxton, Shepherd's Bush
- 7 The Lyric Bar
- 8 The Melody Whiskey Bar

PUBS

- 1 Rutland Arms
- 2 The Blue Anchor
- 3 The Blue Boat
- 4 The Dove
- 5 The Hammersmith Ram
- 6 The Hampshire Hog
- 7 The Queen's Head
- 8 The Stonemasons Arms

CULTURE

- 1 Eventim Apollo
- 2 Lyric Hammersmith
- 3 Olympia London
- 4 White City House

GREEN SPACES

- 1 Brook Green
- 2 Furnivall Gardens
- 3 Ravenscourt Park

QUICK BITES

- 1 Coffeology
- 2 Joe & the Juice
- 3 Paul
- 4 Proud Mary's
- 5 Coffee Station

HEALTH, LEISURE AND SPORTS

- 1 1Rebel Hammersmith
- 2 Auriol Kensington Rowing Club
- 3 Boom Cycle
- 4 Brook Green Tennis Courts and Café
- 5 Craven Cottage Stadium
- 6 Fitness First
- 7 FRAME Gym
- 8 Lumi Power Yoga
- 9 PureGym
- 10 Queen's Club
- 11 Stamford Bridge Stadium
- 12 State of Mind Fitness
- 13 Virgin Active Gym

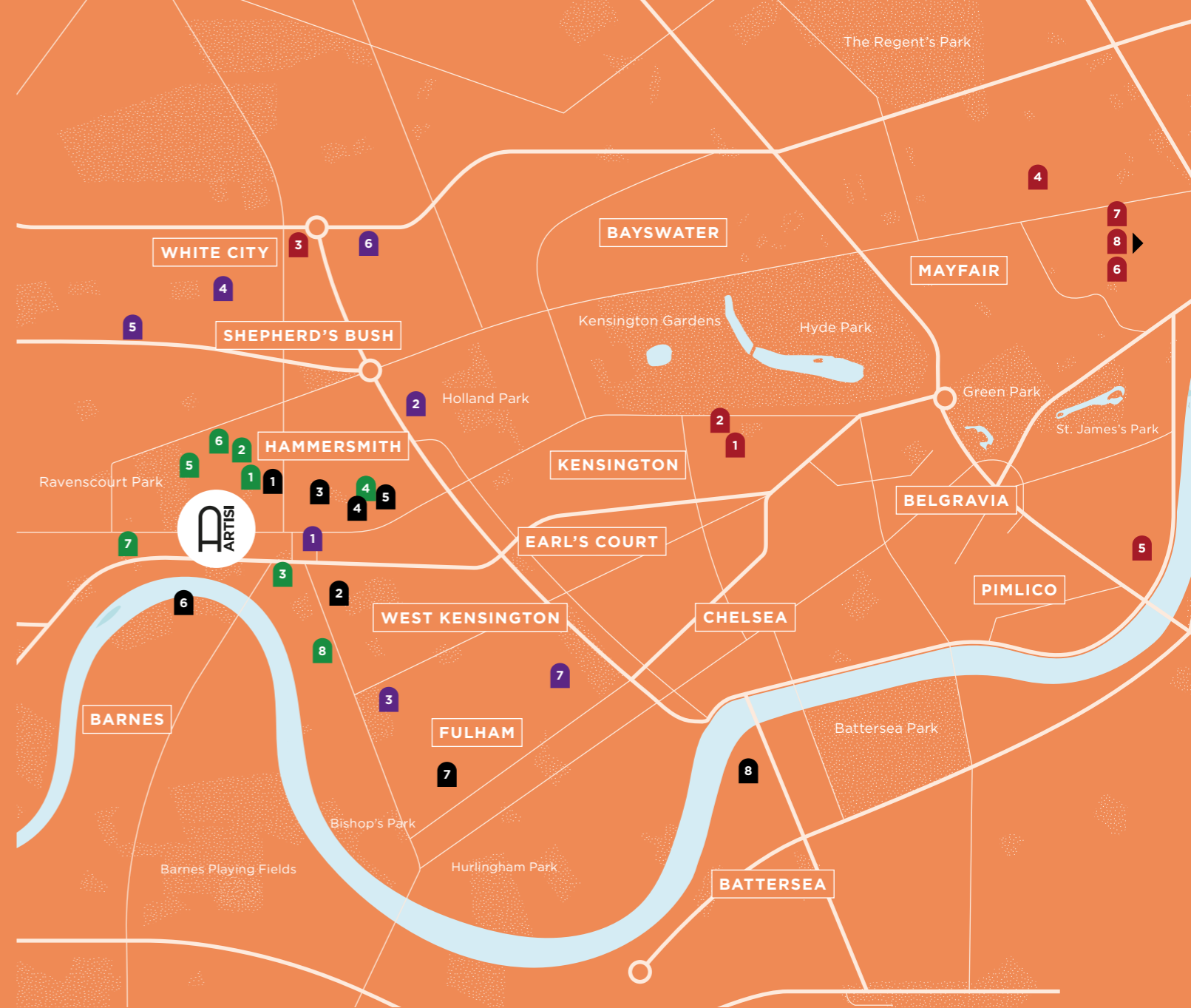


First class education



Hammersmith offers an extensive variety of Ofsted 'Outstanding' schools, as well as some of London's most prestigious independent schools, including St Paul's School for boys and Godolphin and Latymer for girls, all within walking distance from Artisi.

World-leading universities such as King's College, UCL, LSE and the new, multi-million-pound Imperial College Innovation campus are only a short tube ride away.



PRIMARY SCHOOLS

- 1 West London Free School **GOOD**
- 2 Earl's Court Free School Primary **OUTSTANDING**
- 3 St Paul's Primary School **OUTSTANDING**
- 4 Larmenier & Sacred Heart Catholic School **OUTSTANDING**
- 5 John Betts Primary School **GOOD**
- 6 Brackenbury Primary School **GOOD**
- 7 St Peter's Primary School **OUTSTANDING**
- 8 Melcombe Primary School **GOOD**

SECONDARY SCHOOLS

- 1 Sacred Heart High School **OUTSTANDING**
- 2 The Cardinal Vaughan Memorial School **OUTSTANDING**
- 3 Fulham Cross Girls' School **GOOD**
- 4 Jack Tizzard School **OUTSTANDING**
- 5 Queensmill School **GOOD**
- 6 Kensington Aldridge Academy **OUTSTANDING**
- 7 The London Oratory School **OUTSTANDING**

INDEPENDENT SCHOOLS

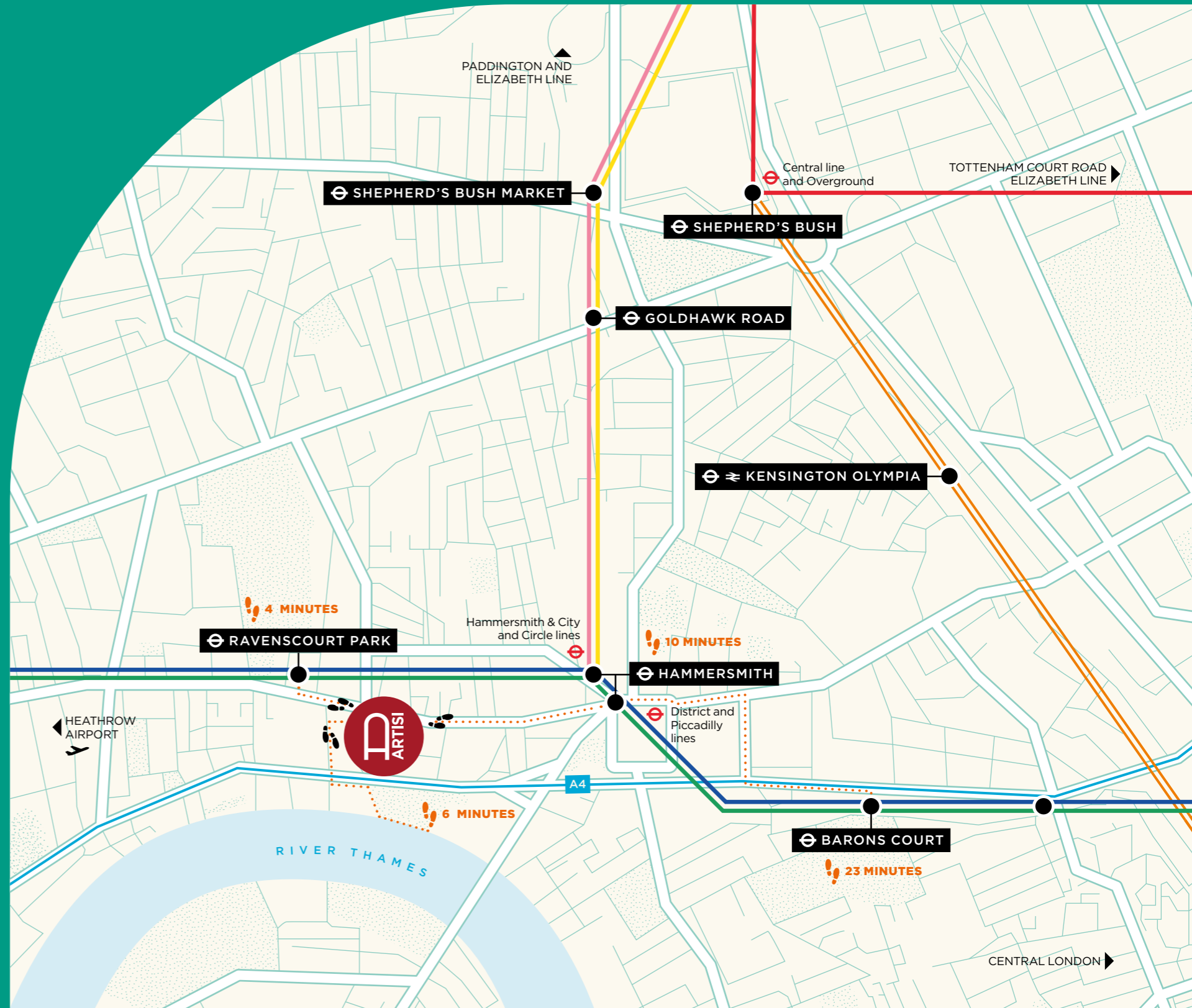
- 1 Godolphin and Latymer School **Good**
- 2 TLG West London **Good**
- 3 Bute House Preparatory School **Good**
- 4 St Paul's Girls' School **GOOD**
- 5 École Francaise Jacques Prevert **GOOD**
- 6 St Paul's School **OUTSTANDING**
- 7 Kensington Prep
- 8 Thomas's Battersea **OUTSTANDING**

UNIVERSITIES

- 1 Imperial College London
- 2 Royal College of Art
- 3 Imperial College London — White City Campus
- 4 University of Westminster
- 5 Chelsea College of Art & Design
- 6 University College London
- 7 London School of Economics
- 8 King's College London

Making connections

Paddington and the Elizabeth line, with its fantastic links to both the countryside and the City, is 20 minutes by tube, whilst the Circle, District, Piccadilly, or Hammersmith & City lines can take you directly to Heathrow, King's Cross for the Eurostar, or the City in under 40 minutes. And for a spot of retail therapy, two stops takes you to Westfield.



Travel times calculated as fastest times from [google.com/maps](https://www.google.com/maps).
Tube and bus travel times calculated from [tfl.com](https://www.tfl.com) (5pm BST).

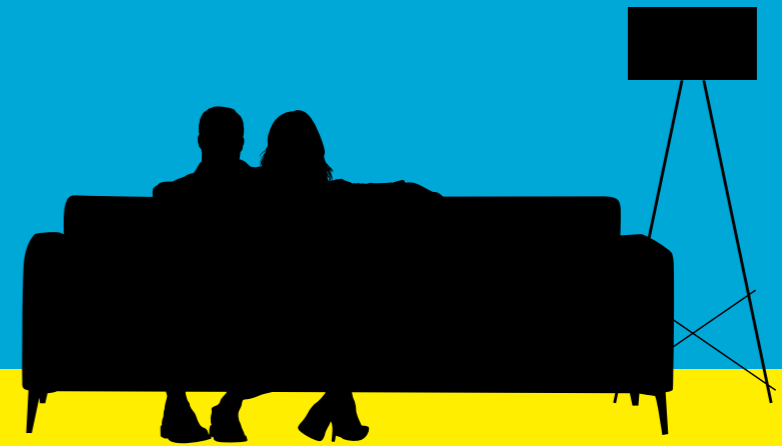


The apartments



Artisi interiors have been thoughtfully curated by award-winning interior designers Darling Associates, who have married together a modern take on the classic Art Deco style of Civic Campus, whilst complimenting the RSHP exteriors.

Come alive in this characterful village-like neighbourhood where creativity, expression and dynamism thrive.



Live a life
less ordinary.





Artisi champions the busiest of lifestyles from its enviable position in the heart of this amenity-packed new community. Residents benefit from a residents-only concierge and on-site security.



Residents' concierge
CGIs are indicative only. Final specification subject to change.



Residents' gym
CGIs are indicative only. Final specification subject to change.



Residents also benefit from a fully-fitted gym to challenge any fitness level: from cardio to functional fitness to boxing. And for unwinding, residents have their own roof terrace overlooking the Thames and the excitement of Civic Campus.



Living and dining room

CGIs are indicative only. Final specification subject to change.



Designed to deliver the perfect spaces for modern lifestyles, palettes for the kitchen and living areas are clean and light, with natural organic materials that come together to create a bright and flexible space.







Balcony views of the Thames

CGIs are indicative only. Final specification subject to change.

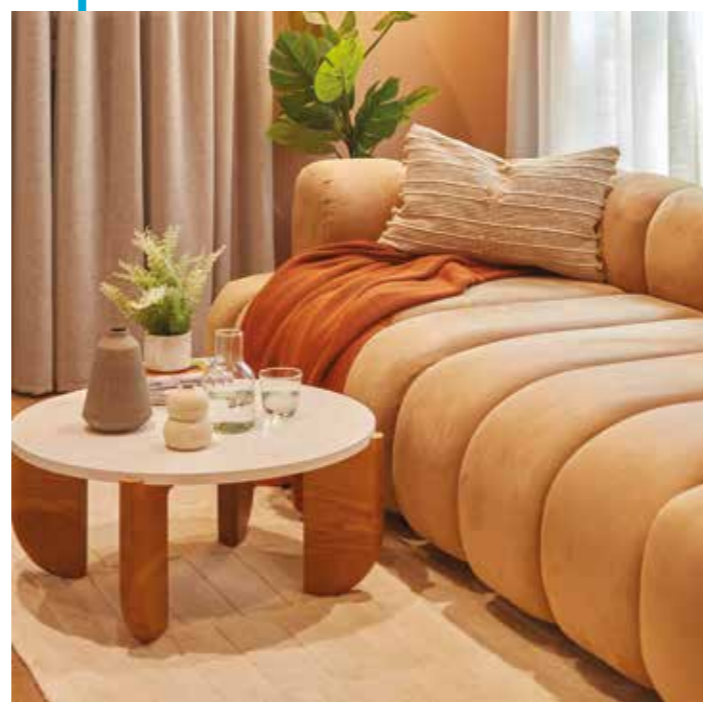
Carefully considered

INTERIOR FINISHES

- Wide plank engineered wood flooring to hallway, lounge, kitchen and dining areas
- Carpet to all bedrooms
- Siemens washer/dryer located in utility cupboard
- Full height built-in wardrobes with hinged doors to master bedroom

KITCHENS

- Taupe Grey kitchen units
- Black integrated Siemens appliances including: built-in fridge/freezer, flush mounted induction hob, built-in microwave oven, built-in single oven and built-in dishwasher
- Silestone worktops with porcelain tile splashback
- Integrated canopy extractor
- Under cabinet LED lighting integrated to underside of wall units
- Brushed stainless steel under-mounted kitchen sink
- Brushed finish stainless steel mixer tap
- Integrated oak laminate finish feature bookcase



BATHROOM AND EN SUITES

- Semi-recessed Vitra basin set on vanity top with brushed nickel mixer tap
- Integrated vanity storage cupboard
- Domus wall, floor and feature tiles
- Built-in single ended bath with hand-held shower and wall mounted overhead shower
- White shower trays with wall fixed shower head and hand-held shower
- Wall hung Vitra WC with concealed cistern and soft close seat and cover
- Glazed bath and shower screens
- Chrome wall mounted electric towel rail



SECURITY AND PEACE OF MIND

- 24-hour staffed site security
- 10-year warranty cover under LABC Scheme
- Access to apartments via colour audio/visual entry system
- Multi point locking to entrance doors
- Mains supply operated smoke/heat detectors with battery back up
- 2-year defect liability period
- Array of PV cells to the roofs

RESIDENTS' FACILITIES AND COMMUNAL AREAS

- Concierge located in Building A
- Residents' only gym featuring a range of gym equipment
- Residents' roof terrace
- Landscaped communal gardens
- Cycle storage with secure access
- Darling Associates designed residential lobbies with residential cores served by passenger lifts

HEATING, HOT WATER, SUSTAINABILITY AND UTILITIES

- Combined heat and power from centralised system
- Ground Source Heat Pump system with individual meter in apartments
- Underfloor heating
- Comfort cooling
- Energy efficient lighting system with integrated sprinklers, heat and smoke detectors
- Wiring for Hyperoptic broadband (subscription required)
- Low level white slimline sockets
- Dimmer switches to living area, master bedroom and second bedroom (where applicable)
- USB sockets to the master bedroom, kitchen and living area



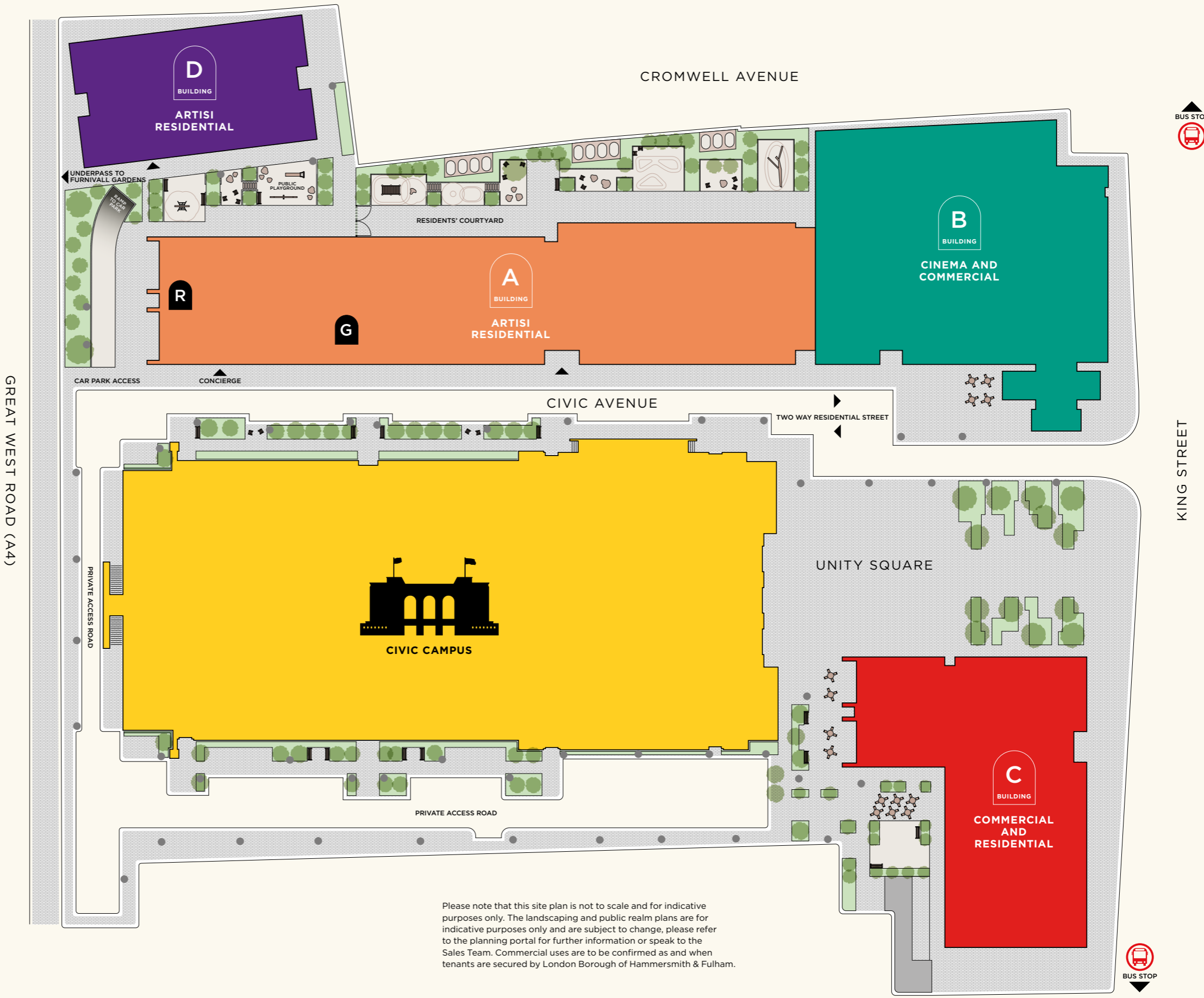
Residents' roof terrace

CGIs are indicative only. Final specification subject to change.

Artisi at Civic Campus



- KEY**
- Ellen Craft Apartments
 - Edmonia Lewis Apartments
 - Lolita Roy Apartments
 - Dora Montefiore Apartments
 - Lamp posts
 - G** Residents' Gym (In Basement)
 - R** Private Residents' Roof Terrace (on sixth floor)



Please note that this site plan is not to scale and for indicative purposes only. The landscaping and public realm plans are for indicative purposes only and are subject to change, please refer to the planning portal for further information or speak to the Sales Team. Commercial uses are to be confirmed as and when tenants are secured by London Borough of Hammersmith & Fulham.



← RIVER THAMES AND FURNIVALL GARDENS

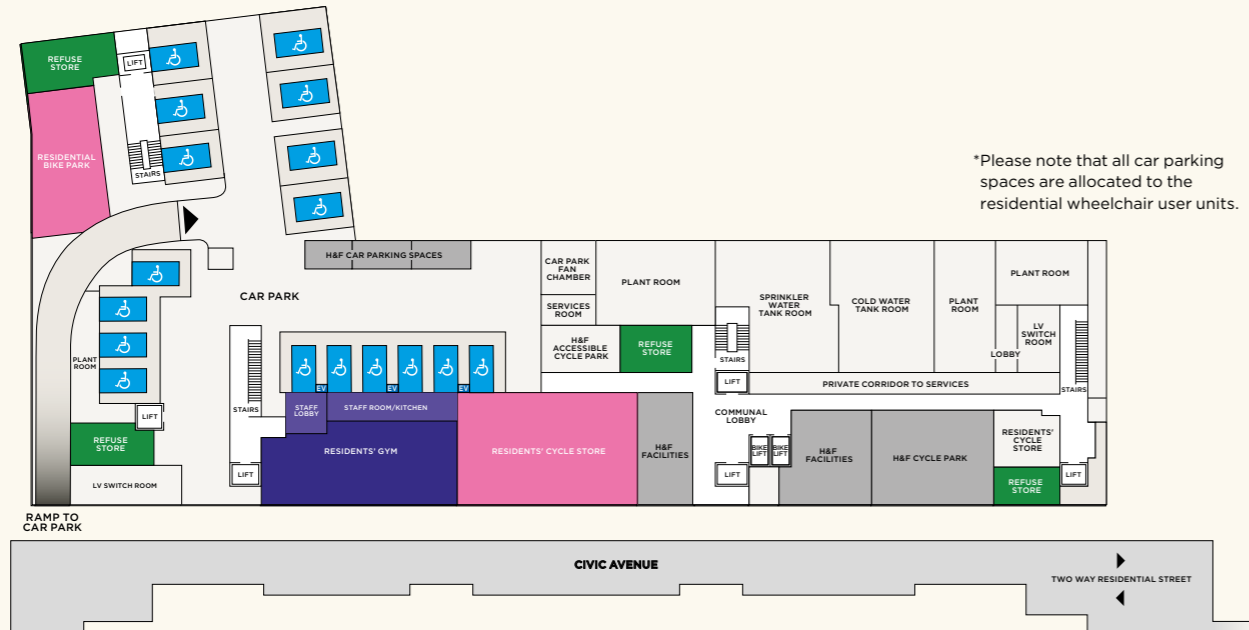
Floorplan directory



BASEMENT

KEY

- Residents car parking spaces*
- H&F Car parking spaces
- H&F Facilities
- EV EV Charging Point



FIRST FLOOR

KEY

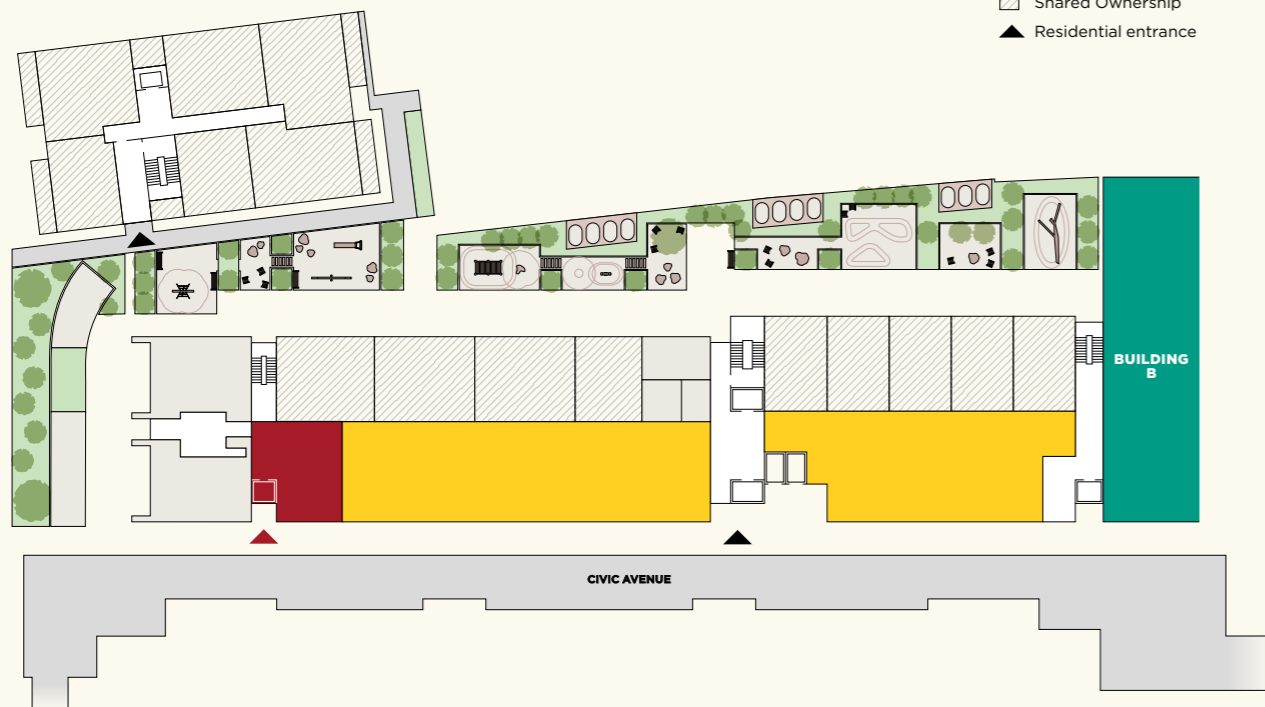
- 1 bedroom
- 2 bedroom
- Shared Ownership
- Affordable Rent



GROUND FLOOR

KEY

- Office/commercial
- Ancillary
- Concierge
- Shared Ownership
- ▲ Residential entrance



SECOND FLOOR

KEY

- 1 bedroom
- 2 bedroom
- Shared Ownership
- Affordable Rent



Floorplan directory



THIRD FLOOR

KEY

- 1 bedroom
- 2 bedroom
- Shared Ownership
- Affordable Rent



FIFTH FLOOR

KEY

- 1 bedroom
- 2 bedroom
- Shared Ownership
- Affordable Rent



FOURTH FLOOR

KEY

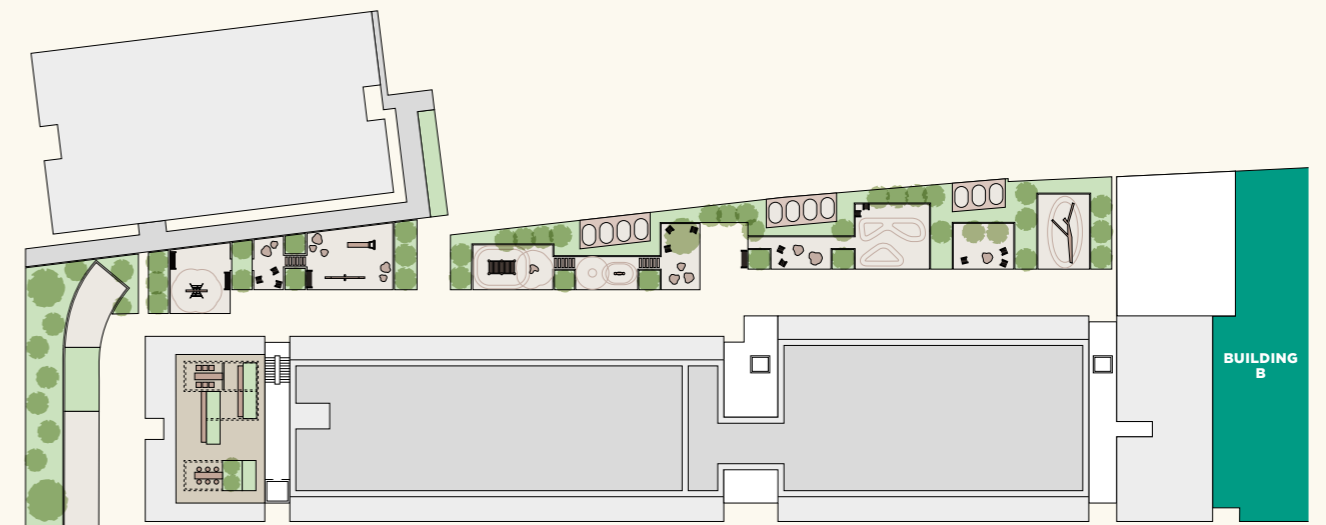
- 1 bedroom
- 2 bedroom
- Shared Ownership
- Affordable Rent



SIXTH FLOOR

KEY

- Residents' roof terrace

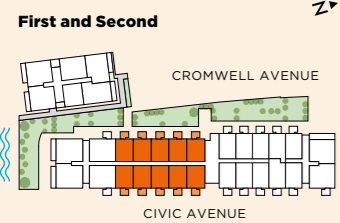


1 BED APARTMENT

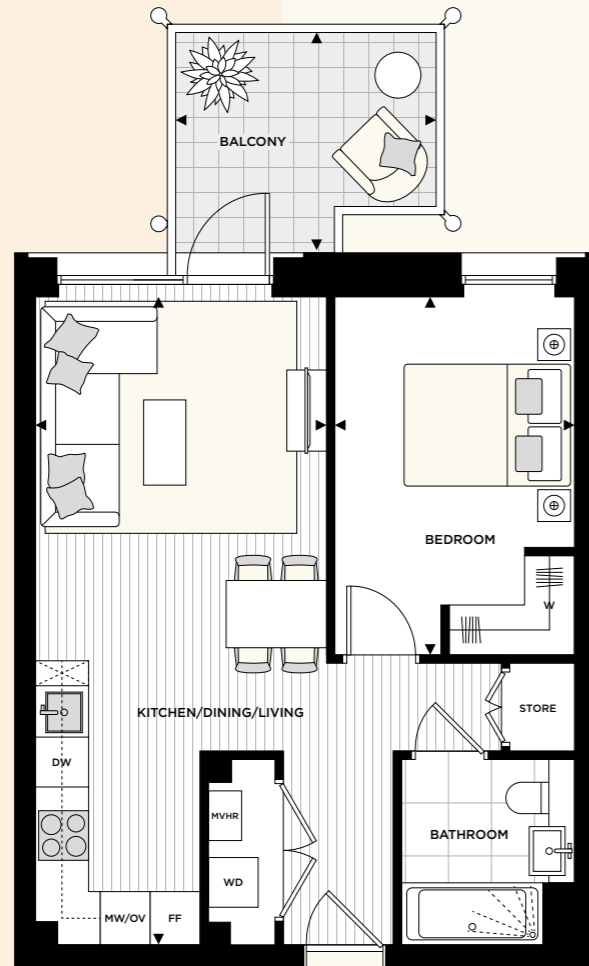
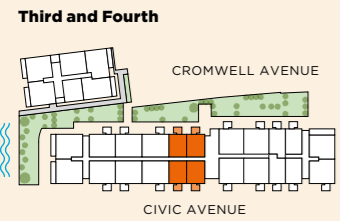


ROOM	DIMENSIONS – METRES	DIMENSIONS – FEET	KEY
Kitchen/Dining/Living	7.78m x 3.51m	25' 6" x 11' 6"	DW Dishwasher FF Fridge freezer WD Washer dryer MW Microwave OV Oven W Wardrobe --- Overhead cupboards ☒ Integrated bookcase
Bedroom	4.30m x 2.90m	14' 1" x 9' 6"	
Apartment area	50.00 sq m	538.20 sq ft	
Balcony	3.13m x 2.66m	10' 3" x 8' 9"	
Balcony area	7.70 sq m	82.88 sq ft	

FLOOR



First	Second	Third	Fourth	
A1.14	A2.40	A3.70*	A4.92*	*HANDED
A1.15*	A2.41*	A3.71	A4.93	
A1.16*	A2.42*	A3.72	A4.94	
A1.17	A2.43	A3.73*	A4.95*	
A1.18	A2.44			



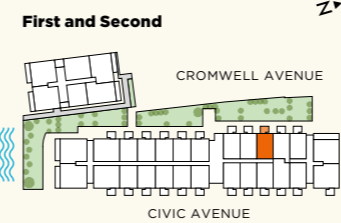
The kitchen, furniture layouts and dimensions on the floorplans are for guidance only. Dimensions are taken from the points indicated and are not intended to be used for carpet sizes, appliance space or items of furniture. The sq m and sq ft are measured as gross internal areas using the RICS property measurement (1st edition). Apartment layouts shown here are for approximate measurements only. All measurements and areas may vary within a tolerance of 5%. Wardrobe layouts and locations are indicative only. Balconies may vary in size. Window arrangements may vary from floor to floor. Room heights are 2400mm for hallways, bathrooms and cupboards and 2600mm for all bedrooms and kitchen/dining/living spaces and may vary due to bulkheads. Pipework boxing locations within store cupboards may also vary. Please speak to your sales executive for details.

1 BED APARTMENT

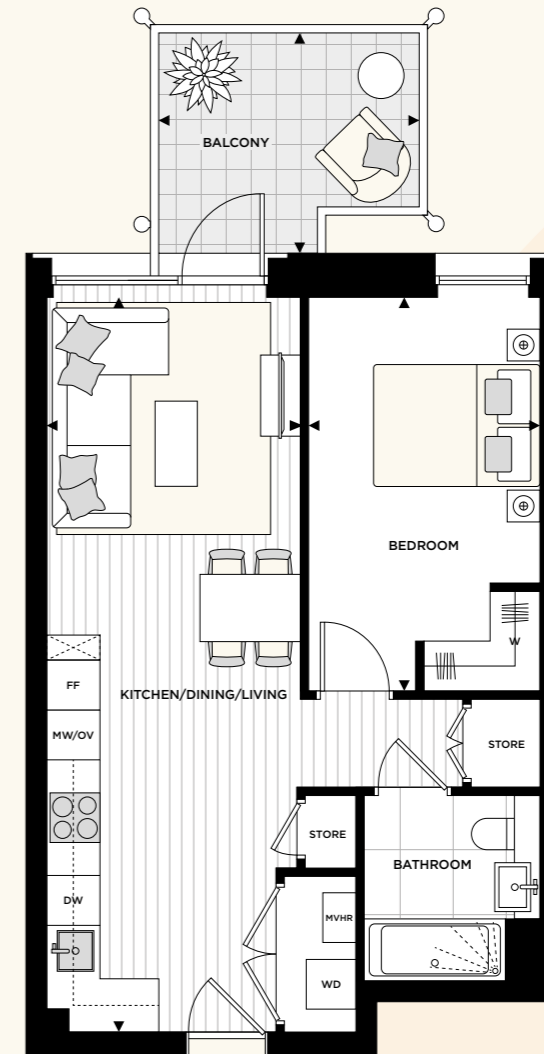


ROOM	DIMENSIONS – METRES	DIMENSIONS – FEET	KEY
Kitchen/Dining/Living	8.86m x 3.10m	29' 1" x 10' 2"	DW Dishwasher FF Fridge freezer WD Washer dryer MW Microwave OV Oven W Wardrobe --- Overhead cupboards ☒ Integrated bookcase
Bedroom	4.75m x 2.75m	15' 7" x 9' 0"	
Apartment area	51.75 sq m	557.00 sq ft	
Balcony	3.13m x 2.66m	10' 3" x 8' 9"	
Balcony area	7.70 sq m	82.88 sq ft	

FLOOR



First	Second	
A1.28	A2.54	*HANDED




The kitchen, furniture layouts and dimensions on the floorplans are for guidance only. Dimensions are taken from the points indicated and are not intended to be used for carpet sizes, appliance space or items of furniture. The sq m and sq ft are measured as gross internal areas using the RICS property measurement (1st edition). Apartment layouts shown here are for approximate measurements only. All measurements and areas may vary within a tolerance of 5%. Wardrobe layouts and locations are indicative only. Balconies may vary in size. Window arrangements may vary from floor to floor. Room heights are 2400mm for hallways, bathrooms and cupboards and 2600mm for all bedrooms and kitchen/dining/living spaces and may vary due to bulkheads. Pipework boxing locations within store cupboards may also vary. Please speak to your sales executive for details.

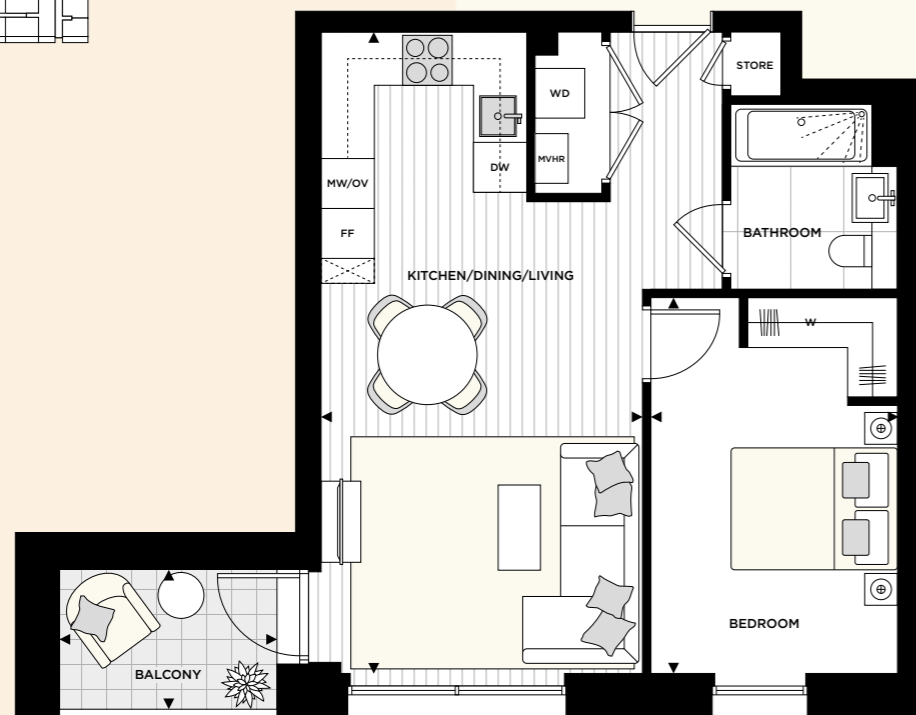
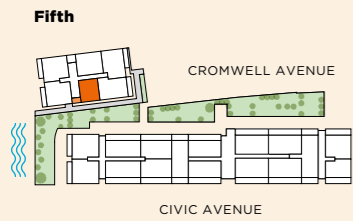
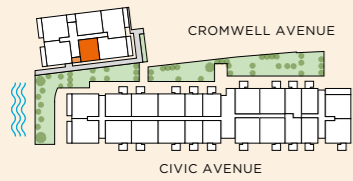
1 BED APARTMENT

D

ROOM	DIMENSIONS – METRES	DIMENSIONS – FEET	KEY
Kitchen/Dining/Living	7.70m x 3.86m	25' 3" x 12' 8"	DW Dishwasher FF Fridge freezer WD Washer dryer MW Microwave OV Oven W Wardrobe --- Overhead cupboards ☒ Integrated bookcase
Bedroom	4.51m x 2.96m	14' 10" x 9' 8"	
Apartment area	51.94 sq m	559.08 sq ft	
Balcony	2.60m x 1.73m	8' 6" x 5' 8"	
Balcony area	4.47 sq m	48.11 sq ft	

FLOOR

Fourth  **Fourth** D4.28 **Fifth** D5.34




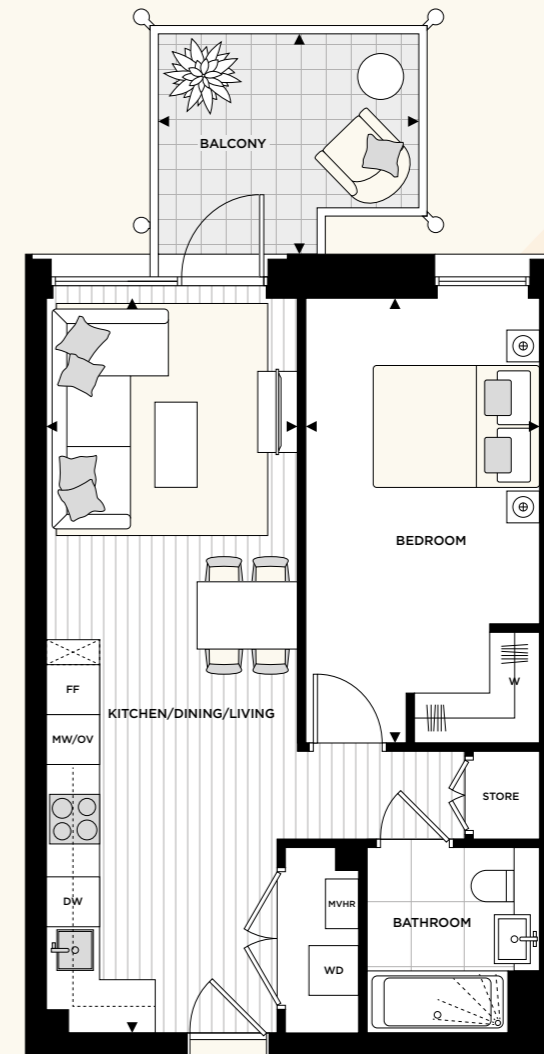
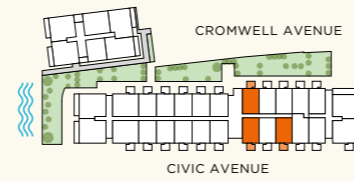
1 BED APARTMENT

A

ROOM	DIMENSIONS – METRES	DIMENSIONS – FEET	KEY
Kitchen/Dining/Living	8.83m x 3.02m	28' 11" x 9' 11"	DW Dishwasher FF Fridge freezer WD Washer dryer MW Microwave OV Oven W Wardrobe --- Overhead cupboards ☒ Integrated bookcase
Bedroom	5.39m x 2.81m	17' 8" x 9' 2"	
Apartment area	52.24 sq m	562.31 sq ft	
Balcony	3.13m x 2.66m	10' 3" x 8' 9"	
Balcony area	7.70 sq m	82.88 sq ft	

FLOOR

First and Second  **First** A1.24 A1.25* A1.29* **Second** A2.50 A2.51* A2.55* ***HANDED**



The kitchen, furniture layouts and dimensions on the floorplans are for guidance only. Dimensions are taken from the points indicated and are not intended to be used for carpet sizes, appliance space or items of furniture. The sq m and sq ft are measured as gross internal areas using the RICS property measurement (1st edition). Apartment layouts shown here are for approximate measurements only. All measurements and areas may vary within a tolerance of 5%. Wardrobe layouts and locations are indicative only. Balconies may vary in size. Window arrangements may vary from floor to floor. Room heights are 2400mm for hallways, bathrooms and cupboards and 2600mm for all bedrooms and kitchen/dining/living spaces and may vary due to bulkheads. Pipework boxing locations within store cupboards may also vary. Please speak to your sales executive for details.

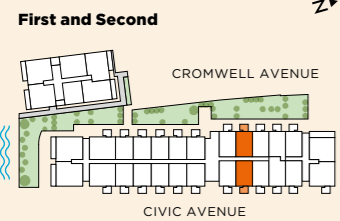
The kitchen, furniture layouts and dimensions on the floorplans are for guidance only. Dimensions are taken from the points indicated and are not intended to be used for carpet sizes, appliance space or items of furniture. The sq m and sq ft are measured as gross internal areas using the RICS property measurement (1st edition). Apartment layouts shown here are for approximate measurements only. All measurements and areas may vary within a tolerance of 5%. Wardrobe layouts and locations are indicative only. Balconies may vary in size. Window arrangements may vary from floor to floor. Room heights are 2400mm for hallways, bathrooms and cupboards and 2600mm for all bedrooms and kitchen/dining/living spaces and may vary due to bulkheads. Pipework boxing locations within store cupboards may also vary. Please speak to your sales executive for details.

1 BED APARTMENT



ROOM	DIMENSIONS – METRES	DIMENSIONS – FEET	KEY
Kitchen/Dining/Living	8.86m x 3.08m	29' 1" x 10' 1"	DW Dishwasher FF Fridge freezer WD Washer dryer MW Microwave OV Oven W Wardrobe --- Overhead cupboards ☒ Integrated bookcase
Bedroom	5.38m x 2.80m	17' 8" x 9' 2"	
Apartment area	52.73 sq m	567.58 sq ft	
Balcony	3.13m x 2.66m	10' 3" x 8' 9"	
Balcony area	7.70 sq m	82.88 sq ft	

FLOOR

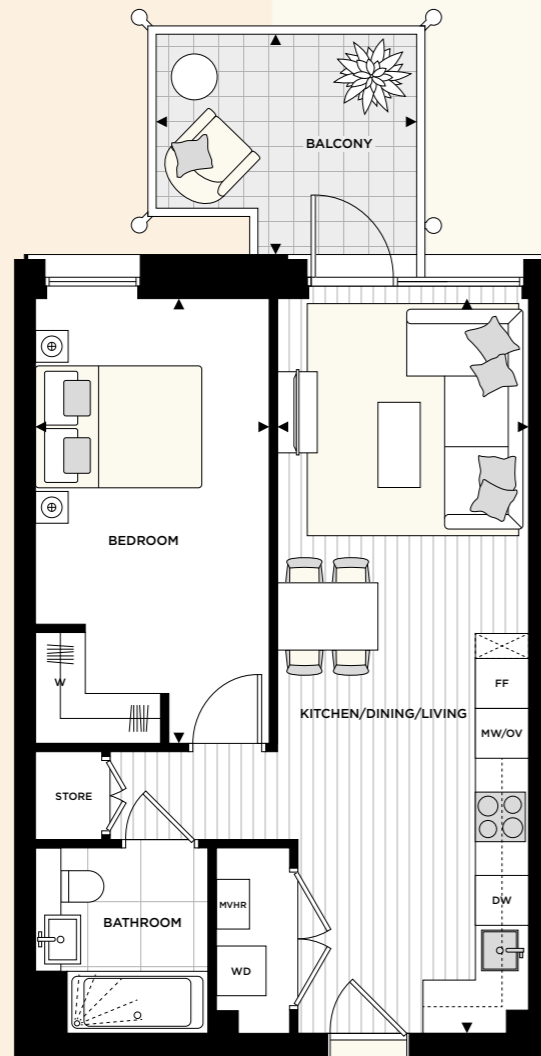


First and Second

First
A1.26
A1.27*

Second
A2.52
A2.53*

*HANDED



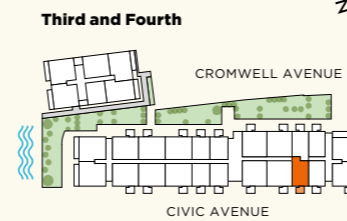
The kitchen, furniture layouts and dimensions on the floorplans are for guidance only. Dimensions are taken from the points indicated and are not intended to be used for carpet sizes, appliance space or items of furniture. The sq m and sq ft are measured as gross internal areas using the RICS property measurement (1st edition). Apartment layouts shown here are for approximate measurements only. All measurements and areas may vary within a tolerance of 5%. Wardrobe layouts and locations are indicative only. Balconies may vary in size. Window arrangements may vary from floor to floor. Room heights are 2400mm for hallways, bathrooms and cupboards and 2600mm for all bedrooms and kitchen/dining/living spaces and may vary due to bulkheads. Pipework boxing locations within store cupboards may also vary. Please speak to your sales executive for details.

1 BED APARTMENT



ROOM	DIMENSIONS – METRES	DIMENSIONS – FEET	KEY
Kitchen/Dining/Living	8.86m x 3.10m	29' 1" x 10' 2"	DW Dishwasher FF Fridge freezer WD Washer dryer MW Microwave OV Oven W Wardrobe --- Overhead cupboards ☒ Integrated bookcase
Bedroom	5.01m x 2.76m	16' 5" x 9' 0"	
Apartment area	57.68 sq m	620.86 sq ft	
Balcony	3.13m x 2.66m	10' 3" x 8' 9"	
Balcony area	7.70 sq m	82.88 sq ft	

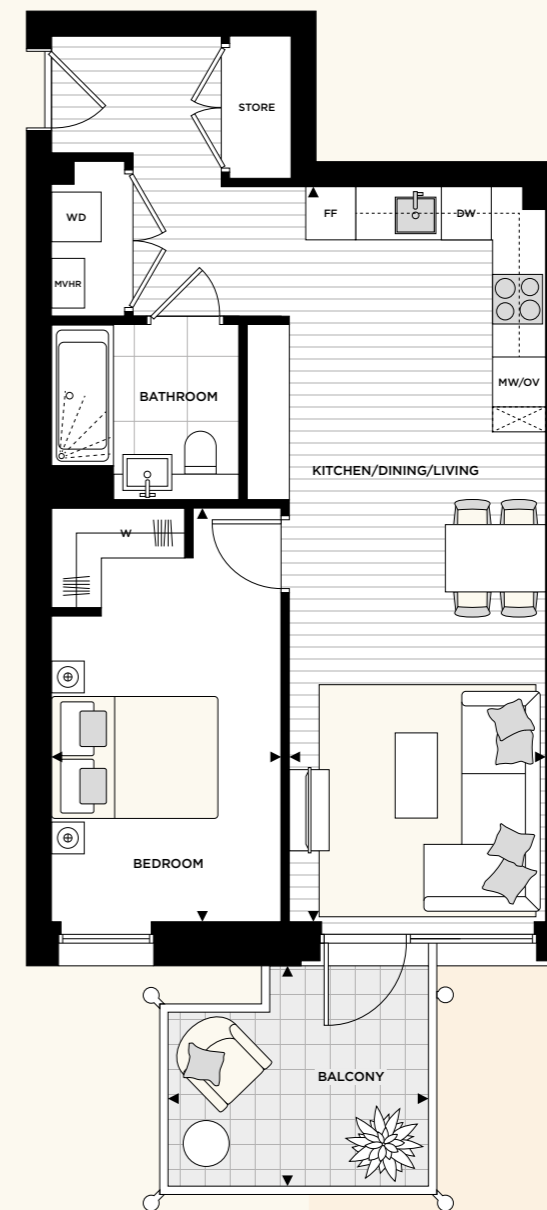
FLOOR



Third and Fourth

Third
A3.79

Fourth
A4.101



The kitchen, furniture layouts and dimensions on the floorplans are for guidance only. Dimensions are taken from the points indicated and are not intended to be used for carpet sizes, appliance space or items of furniture. The sq m and sq ft are measured as gross internal areas using the RICS property measurement (1st edition). Apartment layouts shown here are for approximate measurements only. All measurements and areas may vary within a tolerance of 5%. Wardrobe layouts and locations are indicative only. Balconies may vary in size. Window arrangements may vary from floor to floor. Room heights are 2400mm for hallways, bathrooms and cupboards and 2600mm for all bedrooms and kitchen/dining/living spaces and may vary due to bulkheads. Pipework boxing locations within store cupboards may also vary. Please speak to your sales executive for details.

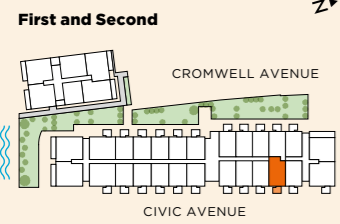
1 BED APARTMENT



A

ROOM	DIMENSIONS — METRES	DIMENSIONS — FEET	KEY
Kitchen/Dining/Living	8.86m x 2.83m	29' 1" x 9' 3"	DW Dishwasher FF Fridge freezer WD Washer dryer
Bedroom	4.67m x 3.03m	15' 4" x 9' 11"	MW Microwave OV Oven
Apartment area	60.25 sq m	648.53 sq ft	W Wardrobe --- Overhead cupboards
Balcony	3.13m x 2.66m	10' 3" x 8' 9"	☒ Integrated bookcase
Balcony area	7.70 sq m	82.88 sq ft	

FLOOR



First and Second
First A1.31 Second A2.57



The kitchen, furniture layouts and dimensions on the floorplans are for guidance only. Dimensions are taken from the points indicated and are not intended to be used for carpet sizes, appliance space or items of furniture. The sq m and sq ft are measured as gross internal areas using the RICS property measurement (1st edition). Apartment layouts shown here are for approximate measurements only. All measurements and areas may vary within a tolerance of 5%. Wardrobe layouts and locations are indicative only. Balconies may vary in size. Window arrangements may vary from floor to floor. Room heights are 2400mm for hallways, bathrooms and cupboards and 2600mm for all bedrooms and kitchen/dining/living spaces and may vary due to bulkheads. Pipework boxing locations within store cupboards may also vary. Please speak to your sales executive for details.

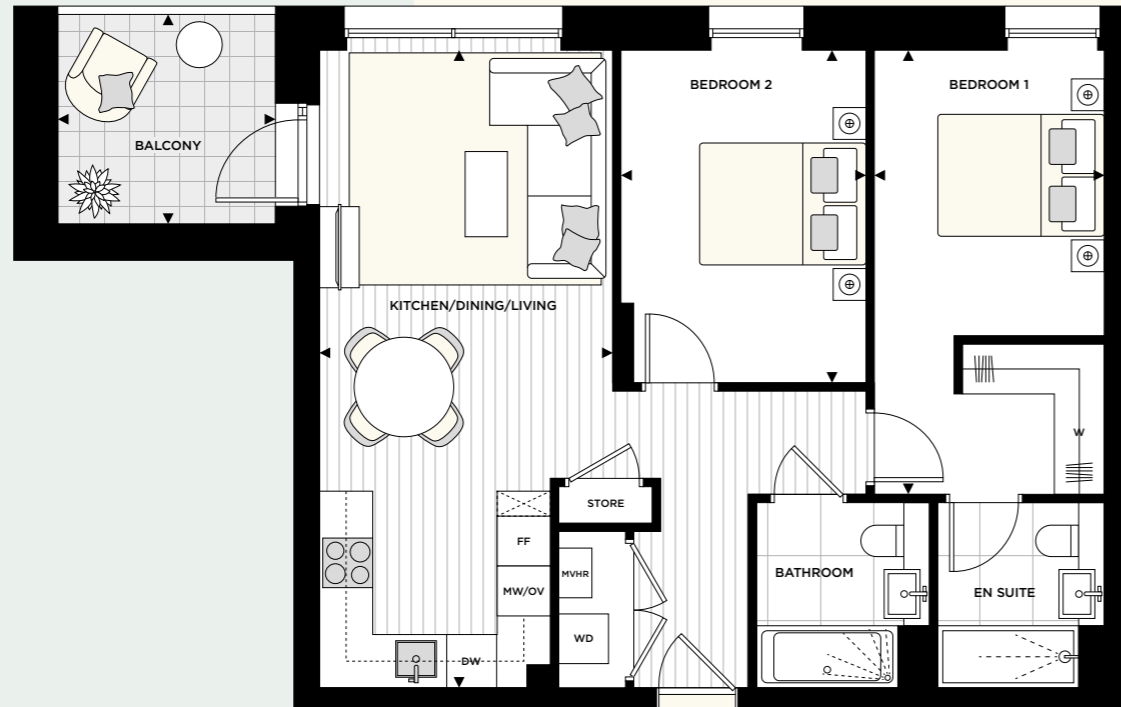
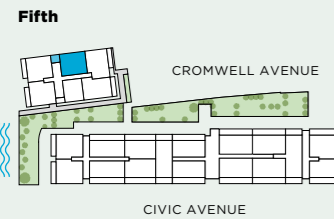
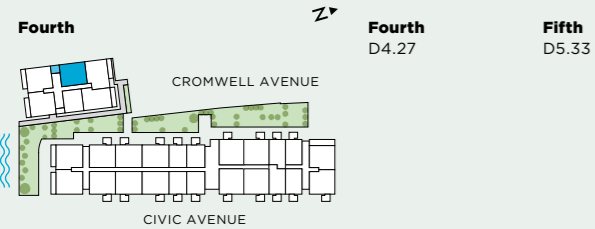


2 BED APARTMENT

D

ROOM	DIMENSIONS – METRES	DIMENSIONS – FEET	KEY
Kitchen/Dining/Living	7.65m x 3.50m	25' 1" x 11' 5"	DW Dishwasher FF Fridge freezer WD Washer dryer MW Microwave OV Oven W Wardrobe --- Overhead cupboards ☒ Integrated bookcase
Bedroom 1	5.32m x 2.77m	17' 6" x 9' 1"	
Bedroom 2	3.99m x 2.96m	13' 1" x 9' 8"	
Apartment area	72.03 sq m	775.32 sq ft	
Balcony	2.60m x 2.51m	8' 6" x 8' 3"	
Balcony area	6.50 sq m	69.96 sq ft	

FLOOR



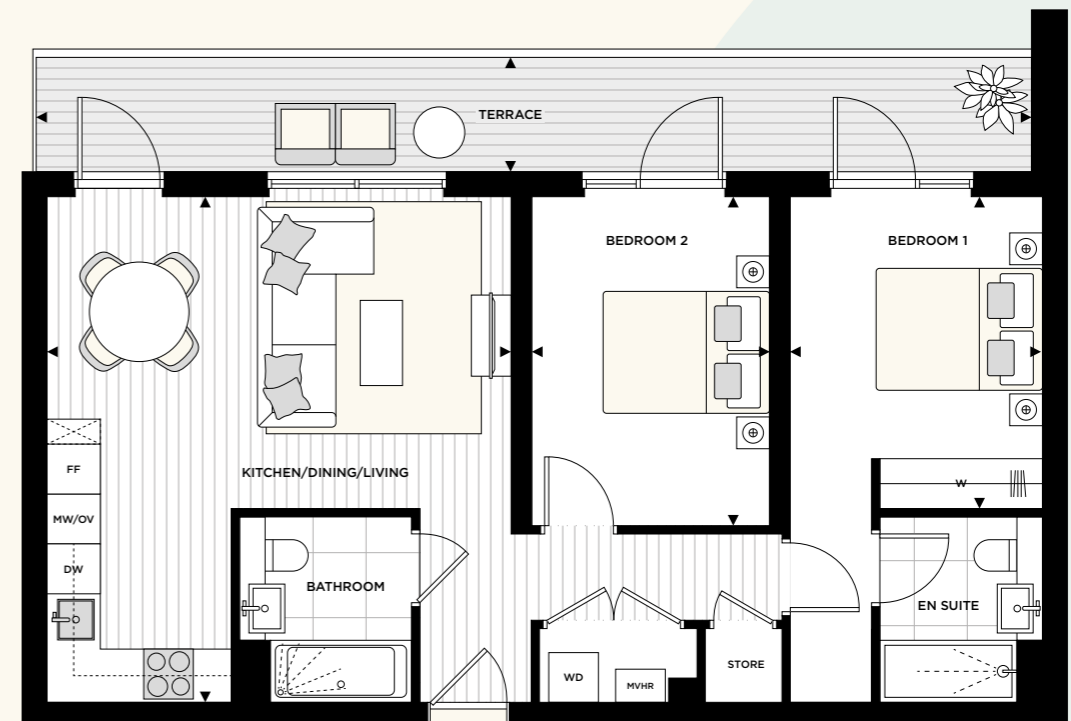
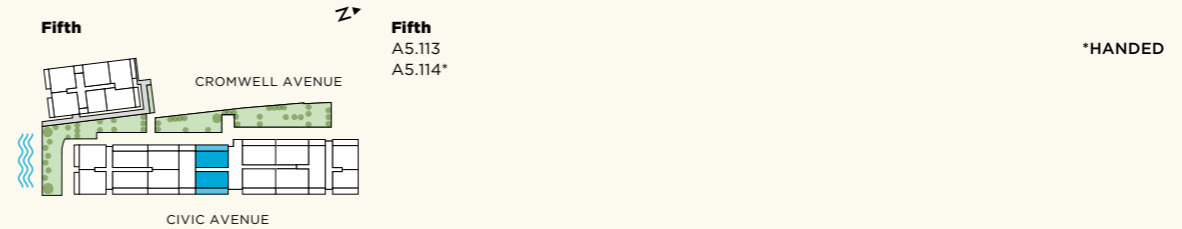
The kitchen, furniture layouts and dimensions on the floorplans are for guidance only. Dimensions are taken from the points indicated and are not intended to be used for carpet sizes, appliance space or items of furniture. The sq m and sq ft are measured as gross internal areas using the RICS property measurement (1st edition). Apartment layouts shown here are for approximate measurements only. All measurements and areas may vary within a tolerance of 5%. Wardrobe layouts and locations are indicative only. Balconies may vary in size. Window arrangements may vary from floor to floor. Room heights are 2400mm for hallways, bathrooms and cupboards and 2600mm for all bedrooms and kitchen/dining/living spaces and may vary due to bulkheads. Pipework boxing locations within store cupboards may also vary. Please speak to your sales executive for details.

2 BED APARTMENT

A

ROOM	DIMENSIONS – METRES	DIMENSIONS – FEET	KEY
Kitchen/Dining/Living	6.08m x 5.58m	19' 11" x 18' 4"	DW Dishwasher FF Fridge freezer WD Washer dryer MW Microwave OV Oven W Wardrobe --- Overhead cupboards ☒ Integrated bookcase
Bedroom 1	3.75m x 3.03m	12' 4" x 9' 11"	
Bedroom 2	3.95m x 2.86m	13' 0" x 9' 4"	
Apartment area	72.70 sq m	782.54 sq ft	
Terrace	11.98m x 1.48m	39' 3" x 4' 10"	
Terrace area	16.38 sq m	176.31 sq ft	

FLOOR



The kitchen, furniture layouts and dimensions on the floorplans are for guidance only. Dimensions are taken from the points indicated and are not intended to be used for carpet sizes, appliance space or items of furniture. The sq m and sq ft are measured as gross internal areas using the RICS property measurement (1st edition). Apartment layouts shown here are for approximate measurements only. All measurements and areas may vary within a tolerance of 5%. Wardrobe layouts and locations are indicative only. Balconies may vary in size. Window arrangements may vary from floor to floor. Room heights are 2400mm for hallways, bathrooms and cupboards and 2600mm for all bedrooms and kitchen/dining/living spaces and may vary due to bulkheads. Pipework boxing locations within store cupboards may also vary. Please speak to your sales executive for details.

2 BED APARTMENT

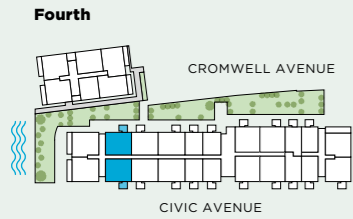
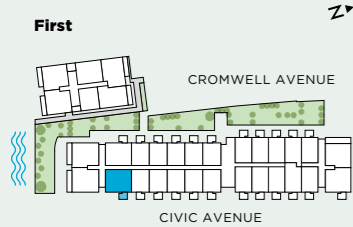


ROOM	DIMENSIONS – METRES	DIMENSIONS – FEET	KEY
Kitchen/Dining/Living	7.78m x 3.39m	25' 6" x 11' 2"	DW Dishwasher FF Fridge freezer WD Washer dryer MW Microwave OV Oven W Wardrobe --- Overhead cupboards ☒ Integrated bookcase
Bedroom 1	5.45m x 2.83m	17' 11" x 9' 4"	
Bedroom 2	3.65m x 2.96m	12' 0" x 9' 8"	
Apartment area	72.85 sq m	784.15 sq ft	
Balcony	3.13m x 2.66m	10' 3" x 8' 9"	
Balcony area	7.70 sq m	82.88 sq ft	

FLOOR

First A1.13 **Fourth** A4.86* A4.87

*HANDED



2 BED APARTMENT

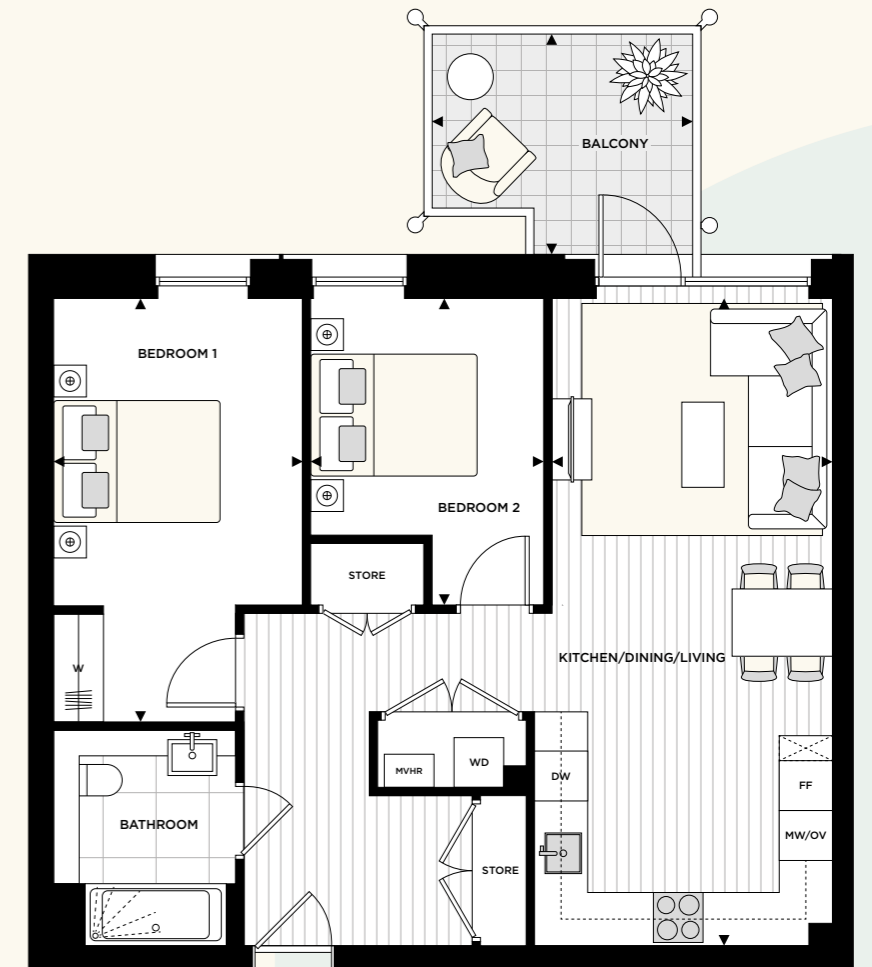
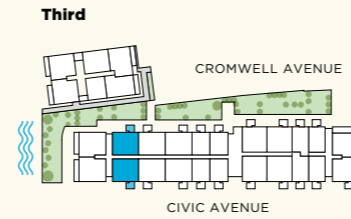
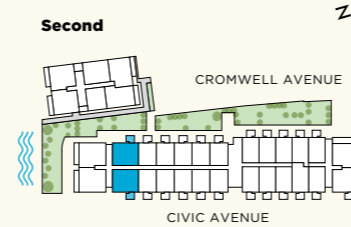


ROOM	DIMENSIONS – METRES	DIMENSIONS – FEET	KEY
Kitchen/Dining/Living	7.77m x 3.37m	25' 6" x 11' 1"	DW Dishwasher FF Fridge freezer WD Washer dryer MW Microwave OV Oven W Wardrobe --- Overhead cupboards ☒ Integrated bookcase
Bedroom 1	5.08m x 3.00m	16' 8" x 9' 10"	
Bedroom 2	3.68m x 2.80m	12' 1" x 9' 2"	
Apartment area	72.85 sq m	784.15 sq ft	
Balcony	3.13m x 2.66m	10' 3" x 8' 9"	
Balcony area	7.70 sq m	82.88 sq ft	

FLOOR

Second A2.38 A2.39* **Third** A3.64 A3.65*

*HANDED



The kitchen, furniture layouts and dimensions on the floorplans are for guidance only. Dimensions are taken from the points indicated and are not intended to be used for carpet sizes, appliance space or items of furniture. The sq m and sq ft are measured as gross internal areas using the RICS property measurement (1st edition). Apartment layouts shown here are for approximate measurements only. All measurements and areas may vary within a tolerance of 5%. Wardrobe layouts and locations are indicative only. Balconies may vary in size. Window arrangements may vary from floor to floor. Room heights are 2400mm for hallways, bathrooms and cupboards and 2600mm for all bedrooms and kitchen/dining/living spaces and may vary due to bulkheads. Pipework boxing locations within store cupboards may also vary. Please speak to your sales executive for details.

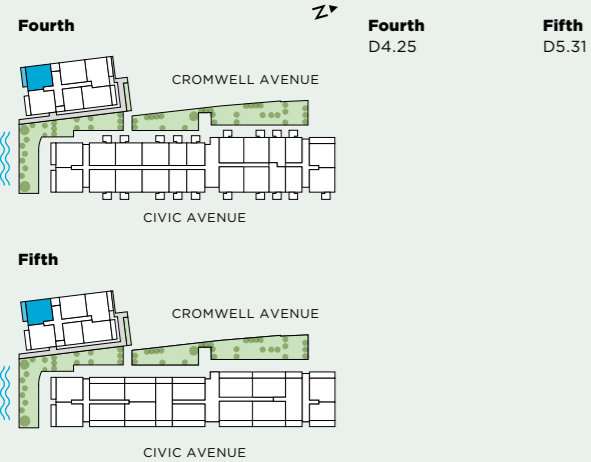
The kitchen, furniture layouts and dimensions on the floorplans are for guidance only. Dimensions are taken from the points indicated and are not intended to be used for carpet sizes, appliance space or items of furniture. The sq m and sq ft are measured as gross internal areas using the RICS property measurement (1st edition). Apartment layouts shown here are for approximate measurements only. All measurements and areas may vary within a tolerance of 5%. Wardrobe layouts and locations are indicative only. Balconies may vary in size. Window arrangements may vary from floor to floor. Room heights are 2400mm for hallways, bathrooms and cupboards and 2600mm for all bedrooms and kitchen/dining/living spaces and may vary due to bulkheads. Pipework boxing locations within store cupboards may also vary. Please speak to your sales executive for details.

2 BED APARTMENT



ROOM	DIMENSIONS – METRES	DIMENSIONS – FEET	KEY
Kitchen/Dining/Living	8.55m x 3.07m	28' 1" x 10' 1"	DW Dishwasher FF Fridge freezer WD Washer dryer MW Microwave OV Oven W Wardrobe --- Overhead cupboards ☒ Integrated bookcase
Bedroom 1	5.37m x 2.77m	17' 7" x 9' 1"	
Bedroom 2	4.09m x 2.91m	13' 5" x 9' 6"	
Apartment area	72.98 sq m	785.55 sq ft	
Winter Garden	6.35m x 1.51m	20' 10" x 4' 11"	
Winter Garden area	9.84 sq m	105.91 sq ft	

FLOOR



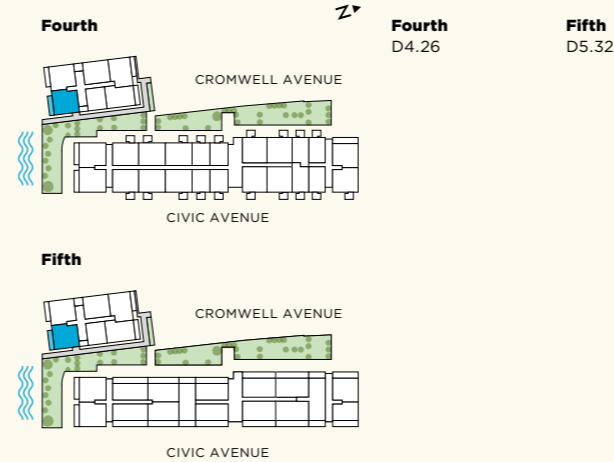
The kitchen, furniture layouts and dimensions on the floorplans are for guidance only. Dimensions are taken from the points indicated and are not intended to be used for carpet sizes, appliance space or items of furniture. The sq m and sq ft are measured as gross internal areas using the RICS property measurement (1st edition). Apartment layouts shown here are for approximate measurements only. All measurements and areas may vary within a tolerance of 5%. Wardrobe layouts and locations are indicative only. Balconies may vary in size. Window arrangements may vary from floor to floor. Room heights are 2400mm for hallways, bathrooms and cupboards and 2600mm for all bedrooms and kitchen/dining/living spaces and may vary due to bulkheads. Pipework boxing locations within store cupboards may also vary. Please speak to your sales executive for details.

2 BED APARTMENT



ROOM	DIMENSIONS – METRES	DIMENSIONS – FEET	KEY
Kitchen/Dining/Living	8.55m x 3.01m	28' 1" x 9' 10"	DW Dishwasher FF Fridge freezer WD Washer dryer MW Microwave OV Oven W Wardrobe --- Overhead cupboards ☒ Integrated bookcase
Bedroom 1	5.37m x 2.75m	17' 8" x 9' 0"	
Bedroom 2	4.08m x 2.98m	13' 5" x 9' 9"	
Apartment area	72.98 sq m	785.55 sq ft	
Winter Garden	6.35m x 1.51m	20' 10" x 4' 11"	
Winter Garden area	9.58 sq m	103.11 sq ft	

FLOOR



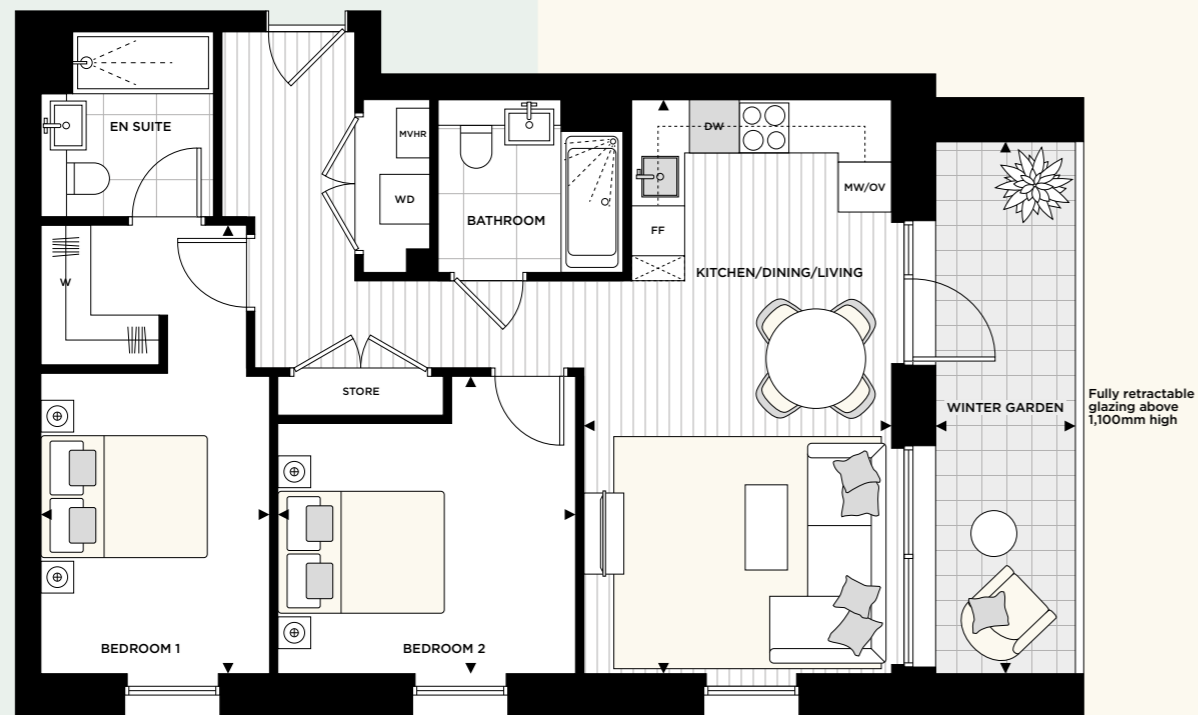
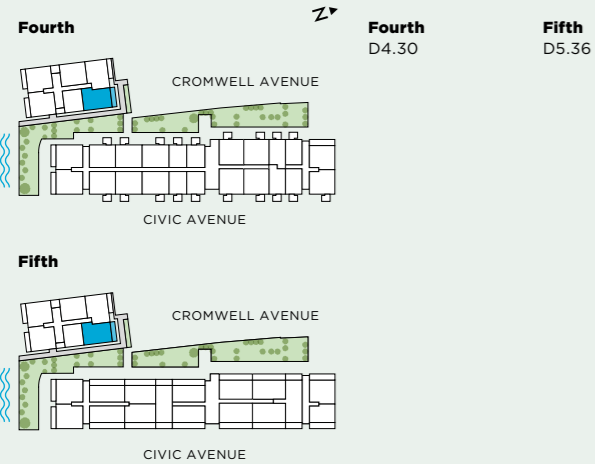
The kitchen, furniture layouts and dimensions on the floorplans are for guidance only. Dimensions are taken from the points indicated and are not intended to be used for carpet sizes, appliance space or items of furniture. The sq m and sq ft are measured as gross internal areas using the RICS property measurement (1st edition). Apartment layouts shown here are for approximate measurements only. All measurements and areas may vary within a tolerance of 5%. Wardrobe layouts and locations are indicative only. Balconies may vary in size. Window arrangements may vary from floor to floor. Room heights are 2400mm for hallways, bathrooms and cupboards and 2600mm for all bedrooms and kitchen/dining/living spaces and may vary due to bulkheads. Pipework boxing locations within store cupboards may also vary. Please speak to your sales executive for details.

2 BED APARTMENT



ROOM	DIMENSIONS – METRES	DIMENSIONS – FEET	KEY
Kitchen/Dining/Living	6.89m x 3.70m	22' 7" x 12' 2"	DW Dishwasher FF Fridge freezer WD Washer dryer MW Microwave OV Oven W Wardrobe --- Overhead cupboards ☒ Integrated bookcase
Bedroom 1	5.37m x 2.75m	17' 8" x 9' 0"	
Bedroom 2	3.59m x 3.56m	11' 9" x 11' 8"	
Apartment area	73.31 sq m	789.10 sq ft	
Winter Garden	6.35m x 1.56m	20' 10" x 5' 1"	
Winter Garden area	9.86 sq m	106.13 sq ft	

FLOOR



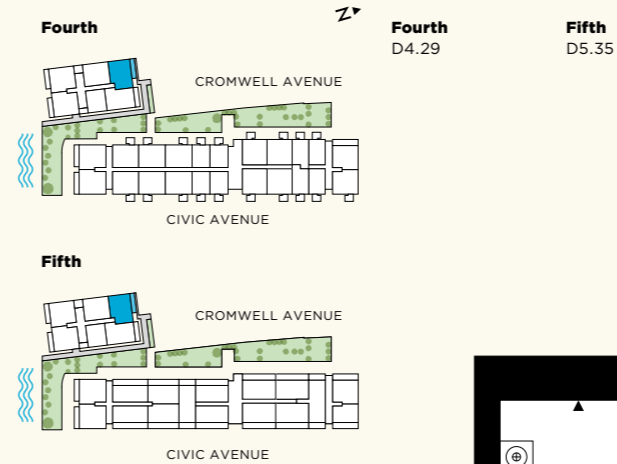
The kitchen, furniture layouts and dimensions on the floorplans are for guidance only. Dimensions are taken from the points indicated and are not intended to be used for carpet sizes, appliance space or items of furniture. The sq m and sq ft are measured as gross internal areas using the RICS property measurement (1st edition). Apartment layouts shown here are for approximate measurements only. All measurements and areas may vary within a tolerance of 5%. Wardrobe layouts and locations are indicative only. Balconies may vary in size. Window arrangements may vary from floor to floor. Room heights are 2400mm for hallways, bathrooms and cupboards and 2600mm for all bedrooms and kitchen/dining/living spaces and may vary due to bulkheads. Pipework boxing locations within store cupboards may also vary. Please speak to your sales executive for details.

2 BED APARTMENT



ROOM	DIMENSIONS – METRES	DIMENSIONS – FEET	KEY
Kitchen/Dining/Living	7.36m x 3.74m	24' 2" x 12' 3"	DW Dishwasher FF Fridge freezer WD Washer dryer MW Microwave OV Oven W Wardrobe --- Overhead cupboards ☒ Integrated bookcase
Bedroom 1	3.87m x 3.38m	12' 8" x 11' 1"	
Bedroom 2	4.17m x 2.75m	13' 8" x 9' 0"	
Apartment area	74.45 sq m	801.37 sq ft	
Winter Garden	6.35m x 1.56m	20' 10" x 5' 1"	
Winter Garden area	9.86 sq m	106.13 sq ft	

FLOOR



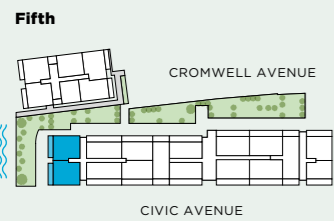
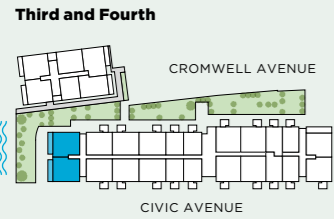
The kitchen, furniture layouts and dimensions on the floorplans are for guidance only. Dimensions are taken from the points indicated and are not intended to be used for carpet sizes, appliance space or items of furniture. The sq m and sq ft are measured as gross internal areas using the RICS property measurement (1st edition). Apartment layouts shown here are for approximate measurements only. All measurements and areas may vary within a tolerance of 5%. Wardrobe layouts and locations are indicative only. Balconies may vary in size. Window arrangements may vary from floor to floor. Room heights are 2400mm for hallways, bathrooms and cupboards and 2600mm for all bedrooms and kitchen/dining/living spaces and may vary due to bulkheads. Pipework boxing locations within store cupboards may also vary. Please speak to your sales executive for details.

2 BED APARTMENT



ROOM	DIMENSIONS – METRES	DIMENSIONS – FEET	KEY
Kitchen/Dining/Living	8.70m x 3.18m	28' 7" x 10' 5"	DW Dishwasher FF Fridge freezer WD Washer dryer MW Microwave OV Oven W Wardrobe --- Overhead cupboards ☒ Integrated bookcase
Bedroom 1	4.61m x 2.79m	15' 2" x 9' 2"	
Bedroom 2	4.26m x 3.05m	14' 0" x 10' 0"	
Apartment area	74.60 sq m	802.99 sq ft	
Winter Garden	7.19m x 1.58m	23' 7" x 5' 2"	
Winter Garden area	10.84 sq m	116.68 sq ft	

FLOOR



Fully retractable glazing above 1,100mm high



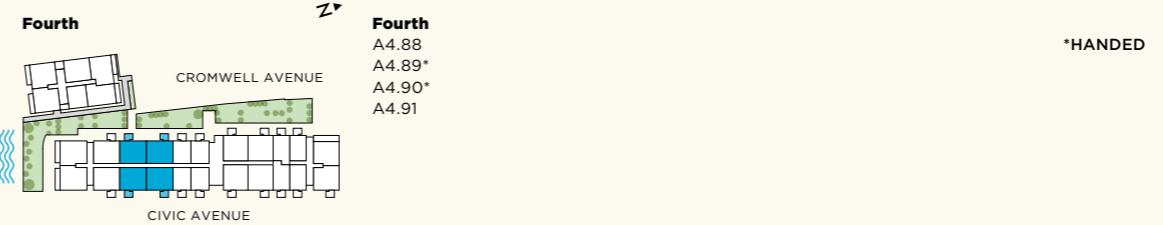
The kitchen, furniture layouts and dimensions on the floorplans are for guidance only. Dimensions are taken from the points indicated and are not intended to be used for carpet sizes, appliance space or items of furniture. The sq m and sq ft are measured as gross internal areas using the RICS property measurement (1st edition). Apartment layouts shown here are for approximate measurements only. All measurements and areas may vary within a tolerance of 5%. Wardrobe layouts and locations are indicative only. Balconies may vary in size. Window arrangements may vary from floor to floor. Room heights are 2400mm for hallways, bathrooms and cupboards and 2600mm for all bedrooms and kitchen/dining/living spaces and may vary due to bulkheads. Pipework boxing locations within store cupboards may also vary. Please speak to your sales executive for details.

2 BED APARTMENT



ROOM	DIMENSIONS – METRES	DIMENSIONS – FEET	KEY
Kitchen/Dining/Living	7.78m x 3.81m	25' 6" x 12' 6"	DW Dishwasher FF Fridge freezer WD Washer dryer MW Microwave OV Oven W Wardrobe --- Overhead cupboards ☒ Integrated bookcase
Bedroom 1	5.45m x 2.91m	17' 11" x 9' 6"	
Bedroom 2	4.30m x 2.96m	14' 1" x 9' 9"	
Apartment area	76.78 sq m	826.45 sq ft	
Balcony	3.13m x 2.66m	10' 3" x 8' 9"	
Balcony area	7.70 sq m	82.88 sq ft	

FLOOR



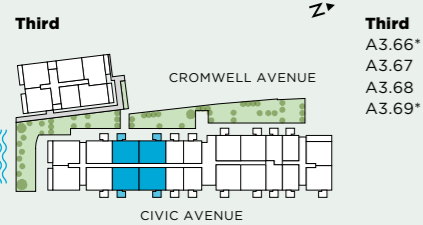
The kitchen, furniture layouts and dimensions on the floorplans are for guidance only. Dimensions are taken from the points indicated and are not intended to be used for carpet sizes, appliance space or items of furniture. The sq m and sq ft are measured as gross internal areas using the RICS property measurement (1st edition). Apartment layouts shown here are for approximate measurements only. All measurements and areas may vary within a tolerance of 5%. Wardrobe layouts and locations are indicative only. Balconies may vary in size. Window arrangements may vary from floor to floor. Room heights are 2400mm for hallways, bathrooms and cupboards and 2600mm for all bedrooms and kitchen/dining/living spaces and may vary due to bulkheads. Pipework boxing locations within store cupboards may also vary. Please speak to your sales executive for details.

2 BED APARTMENT

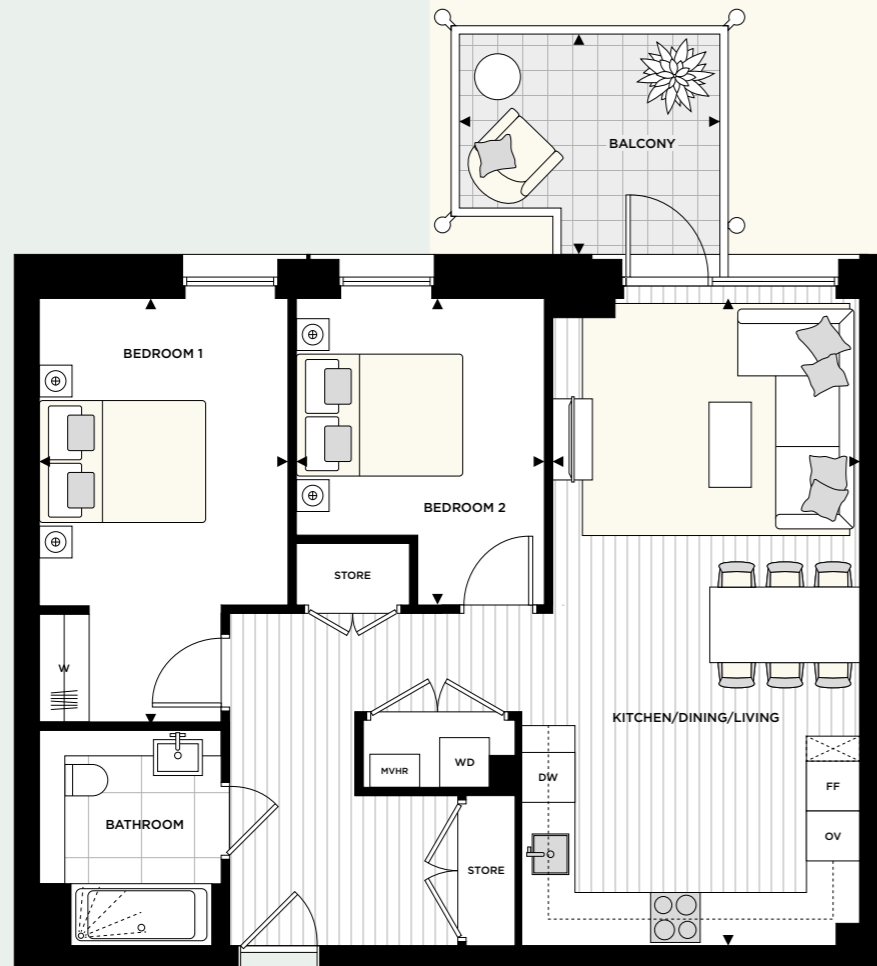


ROOM	DIMENSIONS – METRES	DIMENSIONS – FEET	KEY
Kitchen/Dining/Living	7.78m x 3.71m	25' 6" x 12' 2"	DW Dishwasher FF Fridge freezer WD Washer dryer MW Microwave OV Oven W Wardrobe --- Overhead cupboards ☒ Integrated bookcase
Bedroom 1	5.08m x 3.00m	16' 8" x 9' 10"	
Bedroom 2	3.68m x 2.98m	12' 1" x 9' 9"	
Apartment area	76.78 sq m	826.45 sq ft	
Balcony	3.13m x 2.66m	10' 3" x 8' 9"	
Balcony area	7.70 sq m	82.88 sq ft	

FLOOR



*HANDED



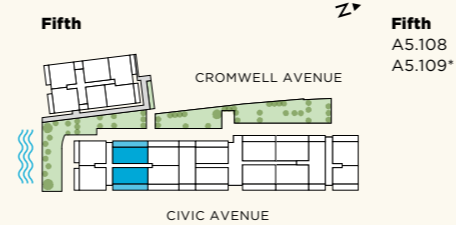
The kitchen, furniture layouts and dimensions on the floorplans are for guidance only. Dimensions are taken from the points indicated and are not intended to be used for carpet sizes, appliance space or items of furniture. The sq m and sq ft are measured as gross internal areas using the RICS property measurement (1st edition). Apartment layouts shown here are for approximate measurements only. All measurements and areas may vary within a tolerance of 5%. Wardrobe layouts and locations are indicative only. Balconies may vary in size. Window arrangements may vary from floor to floor. Room heights are 2400mm for hallways, bathrooms and cupboards and 2600mm for all bedrooms and kitchen/dining/living spaces and may vary due to bulkheads. Pipework boxing locations within store cupboards may also vary. Please speak to your sales executive for details.

2 BED APARTMENT

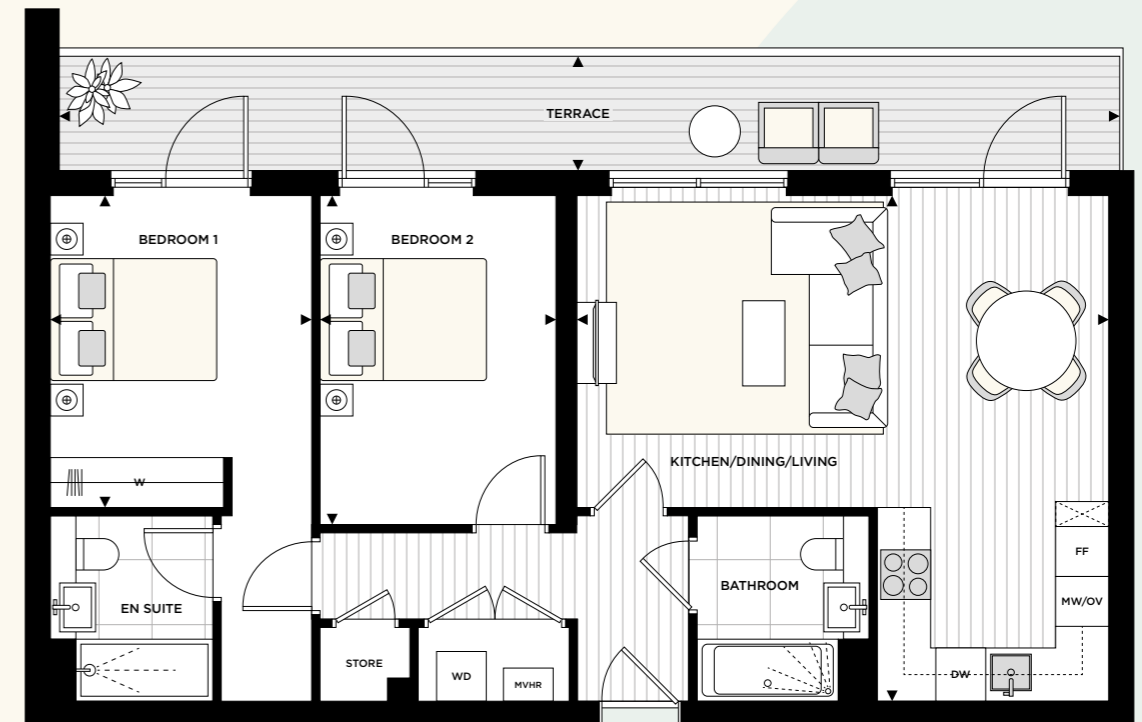


ROOM	DIMENSIONS – METRES	DIMENSIONS – FEET	KEY
Kitchen/Dining/Living	6.37m x 6.08m	20' 11" x 19' 11"	DW Dishwasher FF Fridge freezer WD Washer dryer MW Microwave OV Oven W Wardrobe --- Overhead cupboards ☒ Integrated bookcase
Bedroom 1	3.75m x 3.14m	12' 4" x 10' 3"	
Bedroom 2	3.95m x 2.87m	12' 11" x 9' 5"	
Apartment area	77.28 sq m	831.83 sq ft	
Terrace	12.74m x 1.48m	41' 9" x 4' 10"	
Terrace area	17.41 sq m	187.39 sq ft	

FLOOR



*HANDED



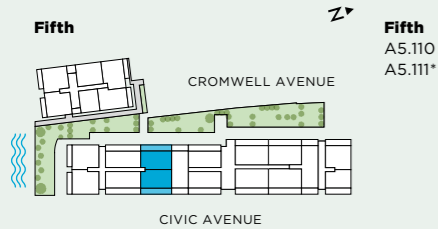
The kitchen, furniture layouts and dimensions on the floorplans are for guidance only. Dimensions are taken from the points indicated and are not intended to be used for carpet sizes, appliance space or items of furniture. The sq m and sq ft are measured as gross internal areas using the RICS property measurement (1st edition). Apartment layouts shown here are for approximate measurements only. All measurements and areas may vary within a tolerance of 5%. Wardrobe layouts and locations are indicative only. Balconies may vary in size. Window arrangements may vary from floor to floor. Room heights are 2400mm for hallways, bathrooms and cupboards and 2600mm for all bedrooms and kitchen/dining/living spaces and may vary due to bulkheads. Pipework boxing locations within store cupboards may also vary. Please speak to your sales executive for details.

2 BED APARTMENT

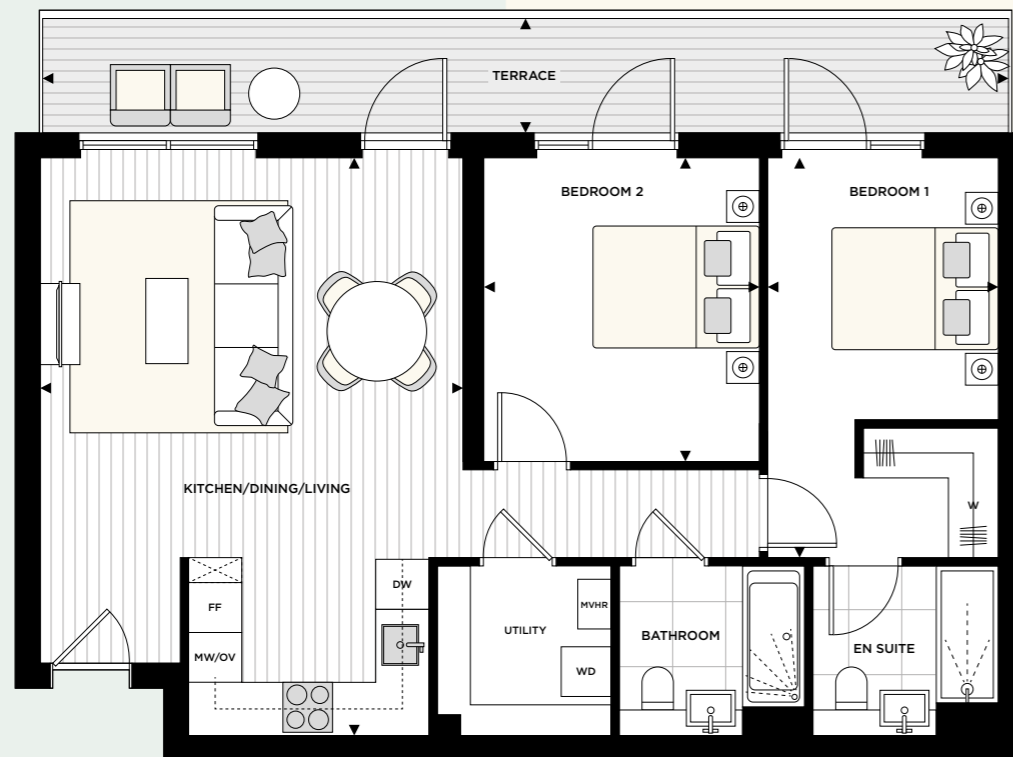
A

ROOM	DIMENSIONS – METRES	DIMENSIONS – FEET	KEY
Kitchen/Dining/Living	6.98m x 5.10m	22' 11" x 16' 9"	DW Dishwasher FF Fridge freezer WD Washer dryer MW Microwave OV Oven W Wardrobe --- Overhead cupboards ☒ Integrated bookcase
Bedroom 1	4.80m x 2.76m	15' 9" x 9' 1"	
Bedroom 2	3.65m x 3.30m	12' 0" x 10' 10"	
Apartment area	78.69 sq m	847.01 sq ft	
Terrace	11.79m x 1.48m	38' 8" x 4' 10"	
Terrace area	16.07 sq m	172.97 sq ft	

FLOOR



*HANDED



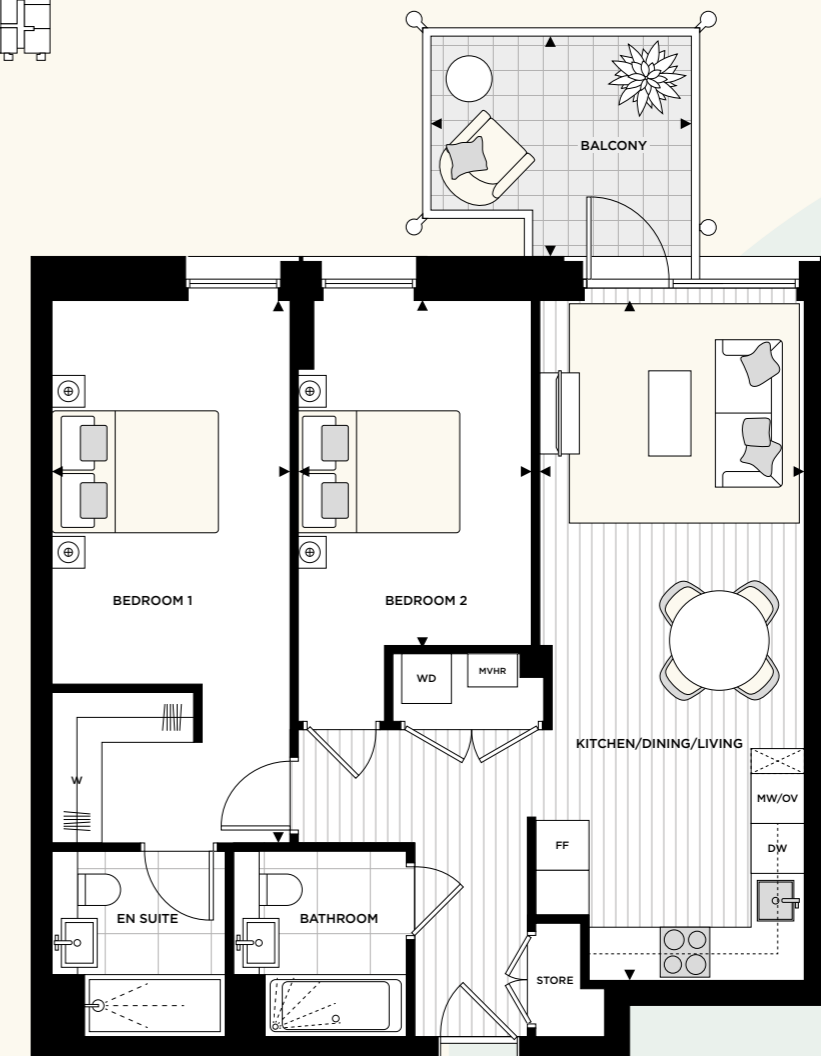
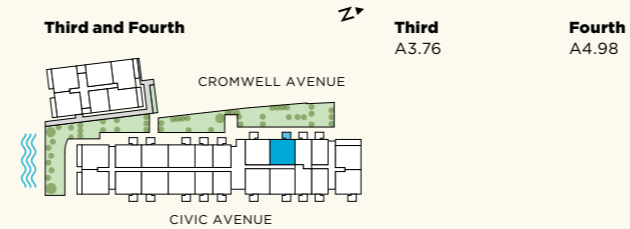
The kitchen, furniture layouts and dimensions on the floorplans are for guidance only. Dimensions are taken from the points indicated and are not intended to be used for carpet sizes, appliance space or items of furniture. The sq m and sq ft are measured as gross internal areas using the RICS property measurement (1st edition). Apartment layouts shown here are for approximate measurements only. All measurements and areas may vary within a tolerance of 5%. Wardrobe layouts and locations are indicative only. Balconies may vary in size. Window arrangements may vary from floor to floor. Room heights are 2400mm for hallways, bathrooms and cupboards and 2600mm for all bedrooms and kitchen/dining/living spaces and may vary due to bulkheads. Pipework boxing locations within store cupboards may also vary. Please speak to your sales executive for details.

2 BED APARTMENT

A

ROOM	DIMENSIONS – METRES	DIMENSIONS – FEET	KEY
Kitchen/Dining/Living	8.24m x 3.25m	27' 0" x 10' 8"	DW Dishwasher FF Fridge freezer WD Washer dryer MW Microwave OV Oven W Wardrobe --- Overhead cupboards ☒ Integrated bookcase
Bedroom 1	6.54m x 2.85m	21' 5" x 9' 4"	
Bedroom 2	4.18m x 2.81m	13' 9" x 9' 3"	
Apartment area	78.96 sq m	849.92 sq ft	
Balcony	3.13m x 2.66m	10' 3" x 8' 9"	
Balcony area	7.70 sq m	82.88 sq ft	

FLOOR



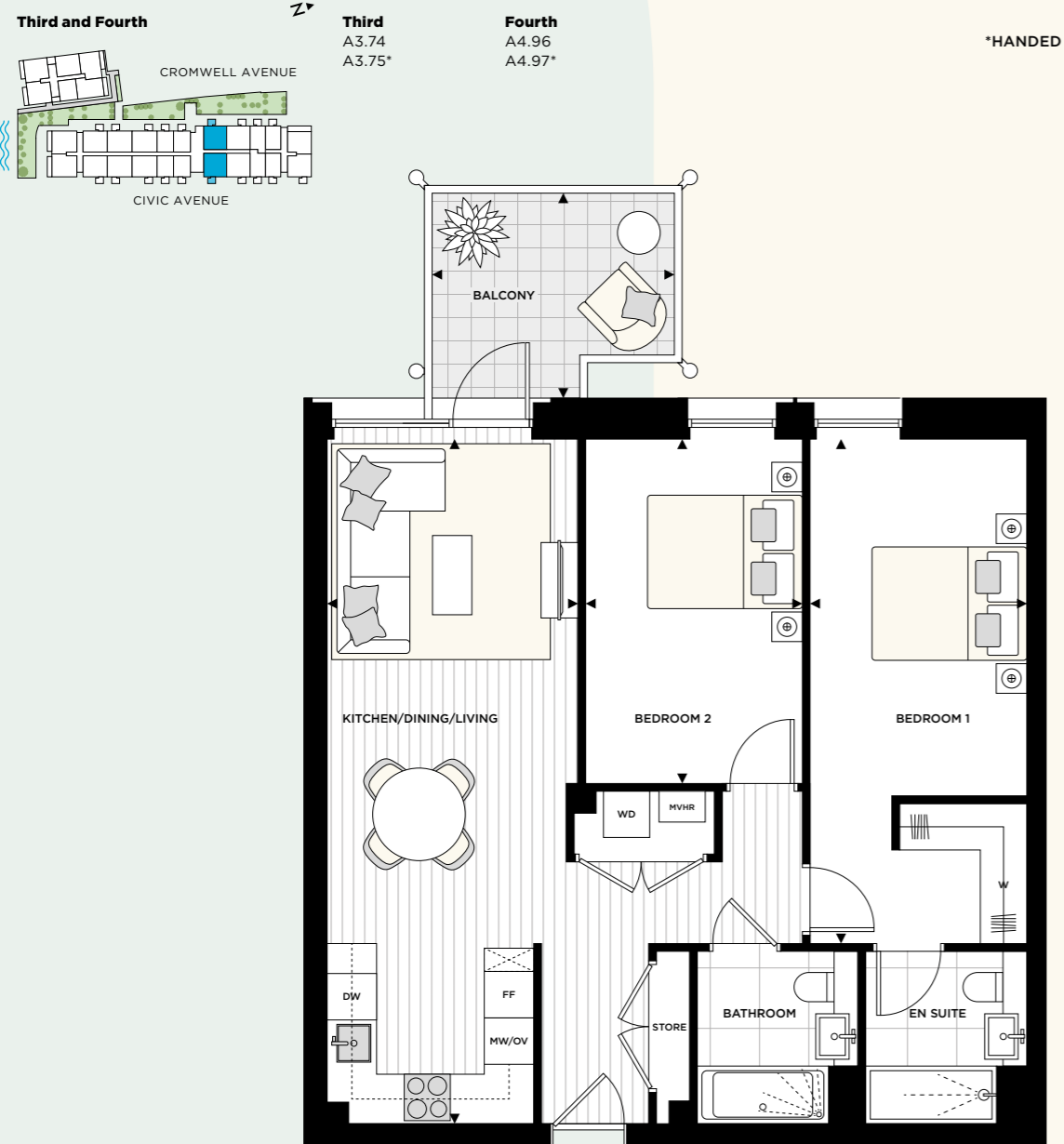
The kitchen, furniture layouts and dimensions on the floorplans are for guidance only. Dimensions are taken from the points indicated and are not intended to be used for carpet sizes, appliance space or items of furniture. The sq m and sq ft are measured as gross internal areas using the RICS property measurement (1st edition). Apartment layouts shown here are for approximate measurements only. All measurements and areas may vary within a tolerance of 5%. Wardrobe layouts and locations are indicative only. Balconies may vary in size. Window arrangements may vary from floor to floor. Room heights are 2400mm for hallways, bathrooms and cupboards and 2600mm for all bedrooms and kitchen/dining/living spaces and may vary due to bulkheads. Pipework boxing locations within store cupboards may also vary. Please speak to your sales executive for details.

2 BED APARTMENT

A

ROOM	DIMENSIONS – METRES	DIMENSIONS – FEET	KEY
Kitchen/Dining/Living	8.83m x 3.25m	28' 11" x 10' 8"	DW Dishwasher FF Fridge freezer WD Washer dryer MW Microwave OV Oven W Wardrobe --- Overhead cupboards ☒ Integrated bookcase
Bedroom 1	6.50m x 2.80m	21' 4" x 9' 2"	
Bedroom 2	4.48m x 2.80m	14' 8" x 9' 2"	
Apartment area	79.82 sq m	859.17 sq ft	
Balcony	3.13m x 2.66m	10' 3" x 8' 9"	
Balcony area	7.70 sq m	82.88 sq ft	

FLOOR



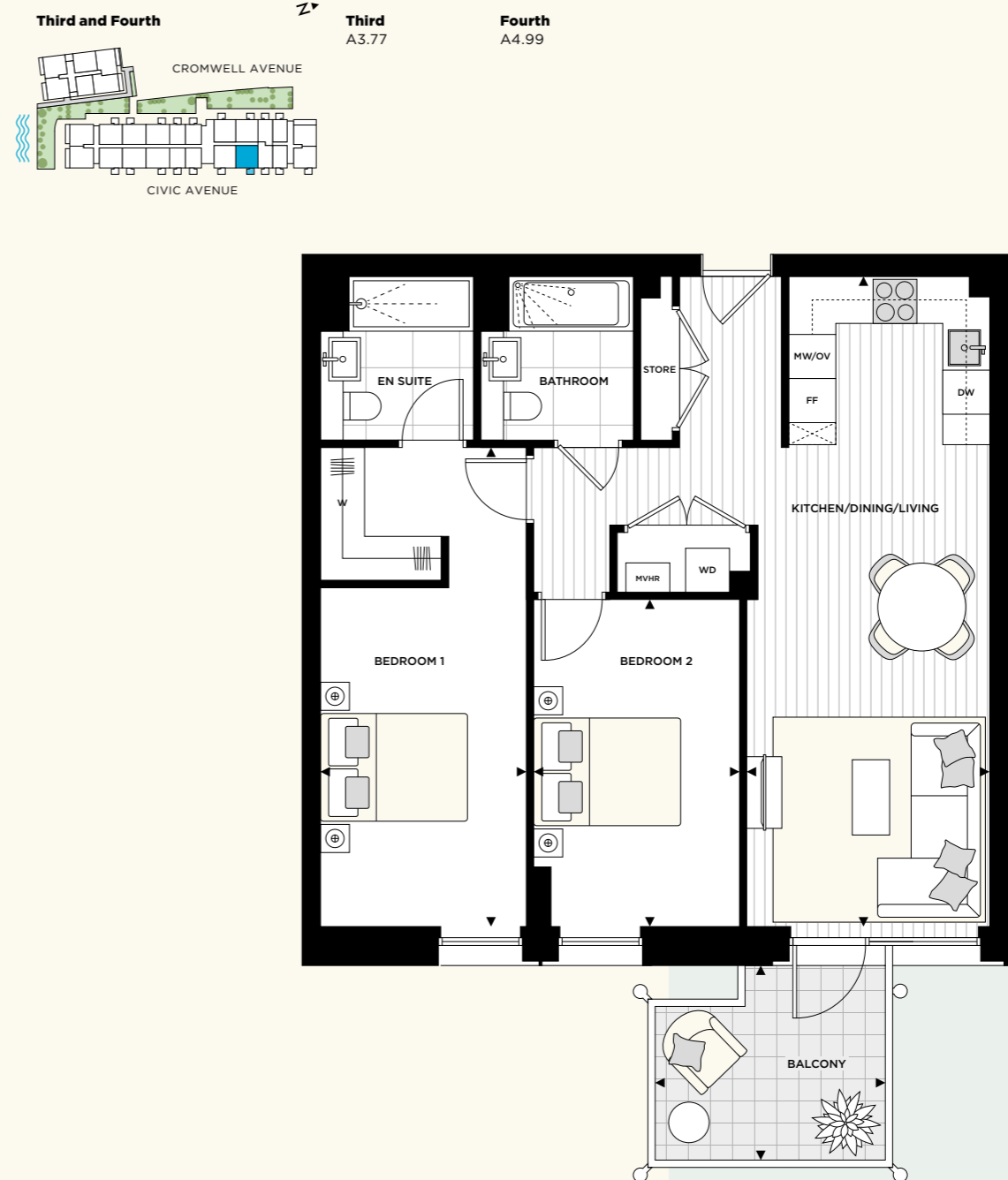
The kitchen, furniture layouts and dimensions on the floorplans are for guidance only. Dimensions are taken from the points indicated and are not intended to be used for carpet sizes, appliance space or items of furniture. The sq m and sq ft are measured as gross internal areas using the RICS property measurement (1st edition). Apartment layouts shown here are for approximate measurements only. All measurements and areas may vary within a tolerance of 5%. Wardrobe layouts and locations are indicative only. Balconies may vary in size. Window arrangements may vary from floor to floor. Room heights are 2400mm for hallways, bathrooms and cupboards and 2600mm for all bedrooms and kitchen/dining/living spaces and may vary due to bulkheads. Pipework boxing locations within store cupboards may also vary. Please speak to your sales executive for details.

2 BED APARTMENT

A

ROOM	DIMENSIONS – METRES	DIMENSIONS – FEET	KEY
Kitchen/Dining/Living	8.86m x 3.30m	29' 1" x 10' 10"	DW Dishwasher FF Fridge freezer WD Washer dryer MW Microwave OV Oven W Wardrobe --- Overhead cupboards ☒ Integrated bookcase
Bedroom 1	6.50m x 2.81m	21' 4" x 9' 3"	
Bedroom 2	4.48m x 2.80m	14' 8" x 9' 2"	
Apartment area	80.31 sq m	864.45 sq ft	
Balcony	3.13m x 2.66m	10' 3" x 8' 9"	
Balcony area	7.70 sq m	82.88 sq ft	

FLOOR



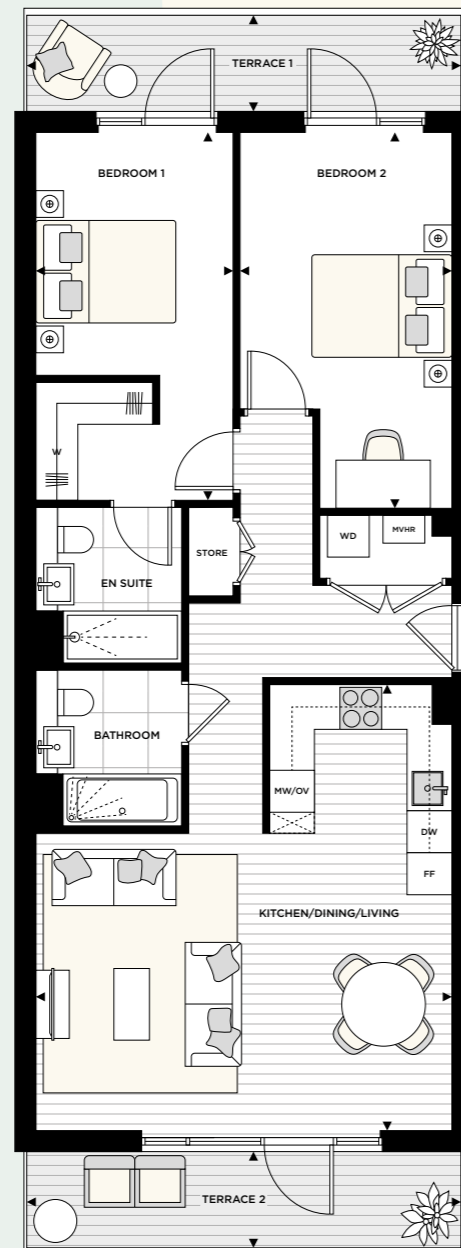
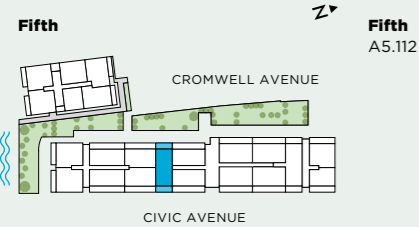
The kitchen, furniture layouts and dimensions on the floorplans are for guidance only. Dimensions are taken from the points indicated and are not intended to be used for carpet sizes, appliance space or items of furniture. The sq m and sq ft are measured as gross internal areas using the RICS property measurement (1st edition). Apartment layouts shown here are for approximate measurements only. All measurements and areas may vary within a tolerance of 5%. Wardrobe layouts and locations are indicative only. Balconies may vary in size. Window arrangements may vary from floor to floor. Room heights are 2400mm for hallways, bathrooms and cupboards and 2600mm for all bedrooms and kitchen/dining/living spaces and may vary due to bulkheads. Pipework boxing locations within store cupboards may also vary. Please speak to your sales executive for details.

2 BED APARTMENT

A

ROOM	DIMENSIONS – METRES	DIMENSIONS – FEET	KEY
Kitchen/Dining/Living	6.37m x 5.95m	20' 11" x 19' 6"	DW Dishwasher FF Fridge freezer WD Washer dryer MW Microwave OV Oven W Wardrobe --- Overhead cupboards ☒ Integrated bookcase
Bedroom 1	5.26m x 2.82m	17' 3" x 9' 3"	
Bedroom 2	5.38m x 3.04m	17' 7" x 9' 11"	
Apartment area	84.79 sq m	912.67 sq ft	
Terrace 1	6.22m x 1.48m	20' 5" x 4' 10"	
Terrace 2	6.22m x 1.48m	20' 5" x 4' 10"	
Terrace area	16.99 sq m	182.87 sq ft	

FLOOR



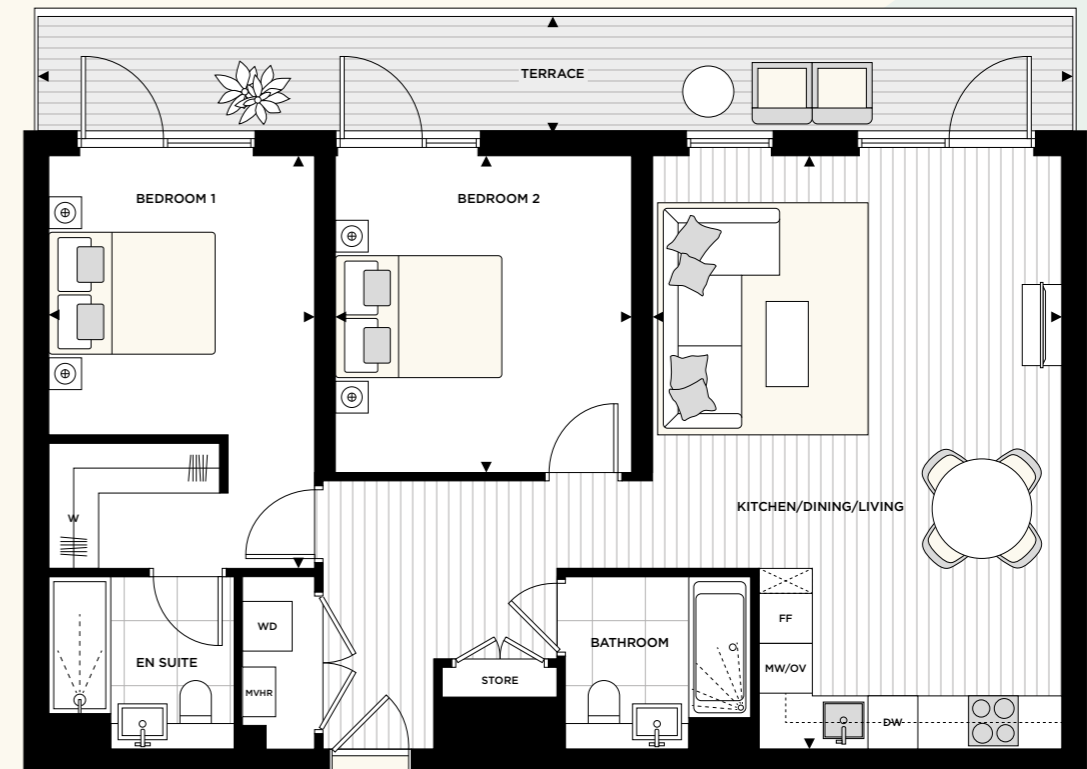
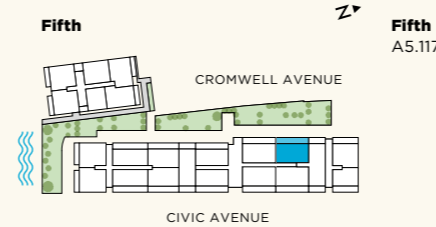
The kitchen, furniture layouts and dimensions on the floorplans are for guidance only. Dimensions are taken from the points indicated and are not intended to be used for carpet sizes, appliance space or items of furniture. The sq m and sq ft are measured as gross internal areas using the RICS property measurement (1st edition). Apartment layouts shown here are for approximate measurements only. All measurements and areas may vary within a tolerance of 5%. Wardrobe layouts and locations are indicative only. Balconies may vary in size. Window arrangements may vary from floor to floor. Room heights are 2400mm for hallways, bathrooms and cupboards and 2600mm for all bedrooms and kitchen/dining/living spaces and may vary due to bulkheads. Pipework boxing locations within store cupboards may also vary. Please speak to your sales executive for details.

2 BED APARTMENT

A

ROOM	DIMENSIONS – METRES	DIMENSIONS – FEET	KEY
Kitchen/Dining/Living	7.13m x 4.94m	23' 5" x 16' 2"	DW Dishwasher FF Fridge freezer WD Washer dryer MW Microwave OV Oven W Wardrobe --- Overhead cupboards ☒ Integrated bookcase
Bedroom 1	4.95m x 3.19m	16' 3" x 10' 6"	
Bedroom 2	3.80m x 3.57m	12' 6" x 11' 8"	
Apartment area	85.96 sq m	925.27 sq ft	
Terrace	12.48m x 1.48m	40' 11" x 4' 10"	
Terrace area	17.00 sq m	182.98 sq ft	

FLOOR



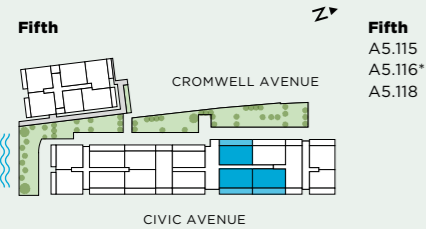
The kitchen, furniture layouts and dimensions on the floorplans are for guidance only. Dimensions are taken from the points indicated and are not intended to be used for carpet sizes, appliance space or items of furniture. The sq m and sq ft are measured as gross internal areas using the RICS property measurement (1st edition). Apartment layouts shown here are for approximate measurements only. All measurements and areas may vary within a tolerance of 5%. Wardrobe layouts and locations are indicative only. Balconies may vary in size. Window arrangements may vary from floor to floor. Room heights are 2400mm for hallways, bathrooms and cupboards and 2600mm for all bedrooms and kitchen/dining/living spaces and may vary due to bulkheads. Pipework boxing locations within store cupboards may also vary. Please speak to your sales executive for details.

2 BED APARTMENT

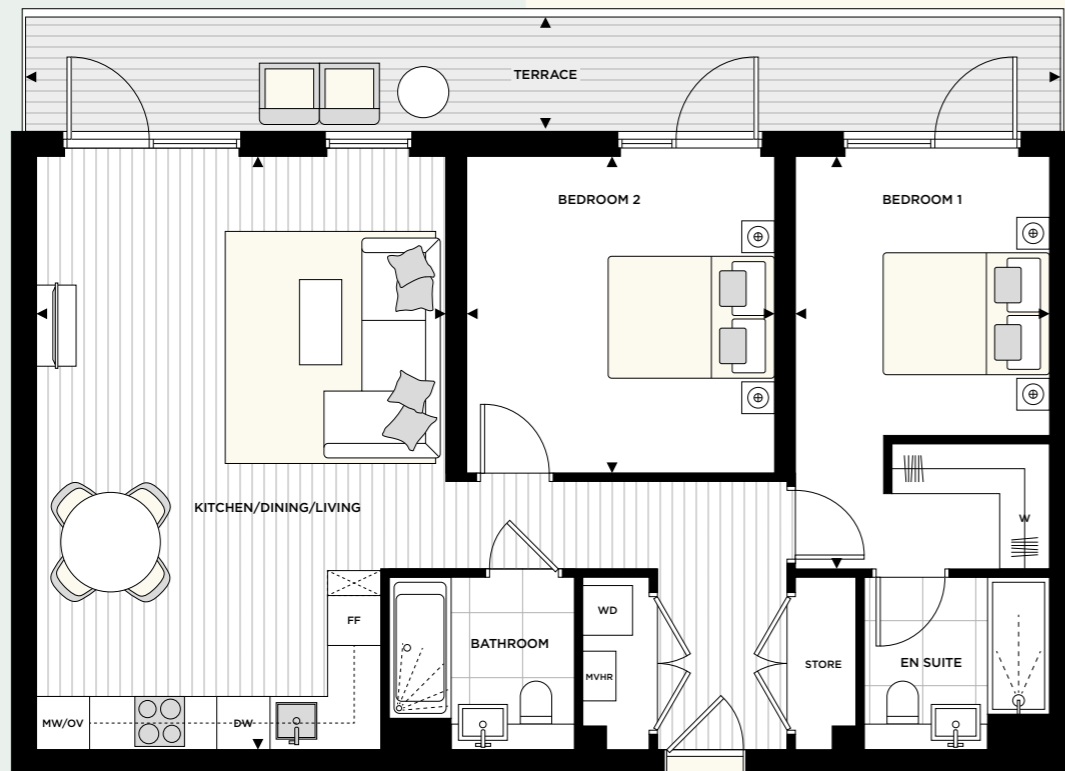
A

ROOM	DIMENSIONS – METRES	DIMENSIONS – FEET	KEY
Kitchen/Dining/Living	7.13m x 4.90m	23' 5" x 16' 1"	DW Dishwasher FF Fridge freezer WD Washer dryer MW Microwave OV Oven W Wardrobe --- Overhead cupboards ☒ Integrated bookcase
Bedroom 1	4.95m x 3.05m	16' 3" x 10' 0"	
Bedroom 2	3.80m x 3.70m	12' 6" x 12' 2"	
Apartment area	86.53 sq m	931.40 sq ft	
Terrace	12.16m x 1.48m	39' 11" x 4' 10"	
Terrace area	16.68 sq m	179.54 sq ft	

FLOOR



*HANDED



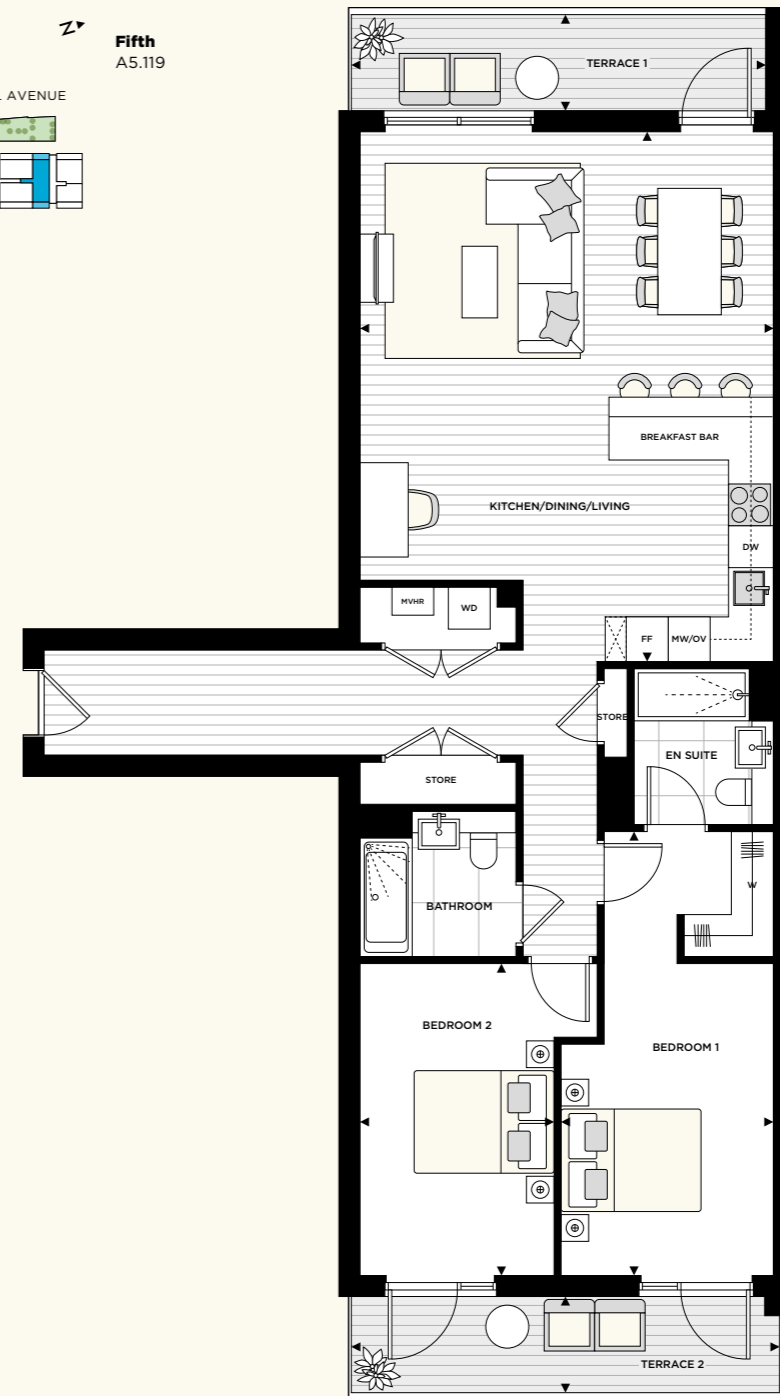
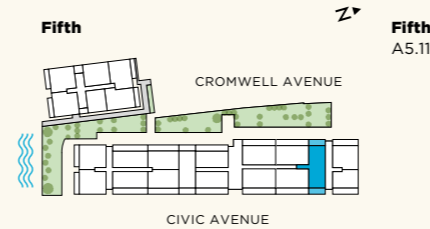
The kitchen, furniture layouts and dimensions on the floorplans are for guidance only. Dimensions are taken from the points indicated and are not intended to be used for carpet sizes, appliance space or items of furniture. The sq m and sq ft are measured as gross internal areas using the RICS property measurement (1st edition). Apartment layouts shown here are for approximate measurements only. All measurements and areas may vary within a tolerance of 5%. Wardrobe layouts and locations are indicative only. Balconies may vary in size. Window arrangements may vary from floor to floor. Room heights are 2400mm for hallways, bathrooms and cupboards and 2600mm for all bedrooms and kitchen/dining/living spaces and may vary due to bulkheads. Pipework boxing locations within store cupboards may also vary. Please speak to your sales executive for details.

2 BED APARTMENT

A

ROOM	DIMENSIONS – METRES	DIMENSIONS – FEET	KEY
Kitchen/Dining/Living	7.58m x 5.91m	24' 10" x 19' 4"	DW Dishwasher FF Fridge freezer WD Washer dryer MW Microwave OV Oven W Wardrobe --- Overhead cupboards ☒ Integrated bookcase
Bedroom 1	6.36m x 3.04m	20' 10" x 10' 0"	
Bedroom 2	4.46m x 2.76m	14' 8" x 9' 1"	
Apartment area	103.25 sq m	1,111.37 sq ft	
Terrace 1	5.91m x 1.48m	19' 5" x 4' 10"	
Terrace 2	6.18m x 1.45m	20' 3" x 4' 9"	
Terrace area	16.36 sq m	176.09 sq ft	

FLOOR



The kitchen, furniture layouts and dimensions on the floorplans are for guidance only. Dimensions are taken from the points indicated and are not intended to be used for carpet sizes, appliance space or items of furniture. The sq m and sq ft are measured as gross internal areas using the RICS property measurement (1st edition). Apartment layouts shown here are for approximate measurements only. All measurements and areas may vary within a tolerance of 5%. Wardrobe layouts and locations are indicative only. Balconies may vary in size. Window arrangements may vary from floor to floor. Room heights are 2400mm for hallways, bathrooms and cupboards and 2600mm for all bedrooms and kitchen/dining/living spaces and may vary due to bulkheads. Pipework boxing locations within store cupboards may also vary. Please speak to your sales executive for details.



Rowers on the Thames,
Hammersmith



FABRICA

by A2Dominion



FABRICA — JOINT VENTURE PARTNER

FABRICA is part of an award-winning property business, committed to creating meticulously designed, skilfully produced homes. From apartments of striking urban architecture to houses with a more rural intimate charm, our aim is always the same: to create beautifully designed homes that are a real pleasure to live in. Our design ethos and commitment to sustainability mean that our homes are built in carefully considered locations and are sympathetic to the environment. Every project reflects our dedication to thoughtfully designed, sustainable living and to providing an outstanding experience for our customers.

People are at the heart of everything we do, and because we own and manage our properties, our commitment to providing the best possible service for our customers never stops. Our estate management team is exceptional and has the awards to prove it.

FABRICA is part of the A2Dominion Group, with over 70 years of experience and an asset base of £8.7 billion across almost 38,000 homes and 68,000 customers across London and southern England, we are one of the UK's largest developers.

We are part of the G15 and our A credit rating and pipeline of 5,000 homes, combined with our partnerships with world-class architects and interior designers, ensure that we maintain our unique approach to house building. We don't just build remarkable homes, we invest all profits into projects that benefit communities and create better ways to live.

Pride in every detail is what we live by.



Queens Wharf, W6



Jigsaw, W13



Hanwell Square, W7



LONDON BOROUGH OF HAMMERSMITH & FULHAM — JOINT VENTURE PARTNER

Hammersmith & Fulham do things differently, they challenge old-fashioned thinking. Their philosophy is to enhance civic life by empowering residents to change their own neighbourhoods for the better. That includes giving residents a leading role in developing policy in public, with the public. They're ambitious for the borough and know they will succeed if they bring people together and work with them to ensure they tackle what holds us back.

The Council serves 185,000 residents and businesses in a proudly diverse neighbourhood in west London. It works with multiple partners to improve the economic and social welfare of residents on an inclusive basis. It offers free adult social care, free schools meals in its schools and has worked with Imperial College, London to create a thriving entrepreneurial ecosystem in the borough. Its climate emergency goal is to be Net Zero Carbon by 2030.

The Council is committed to having 3,000 energy efficient and affordable homes being built or underway in the next four years and has the third lowest council tax in Britain.



ARTISI.LONDON



FABRICA is delighted to be a registered developer with the New Homes Quality Board (NHQB), an independent, not-for-profit organisation designed to oversee reform in the new homes sector.

The means that buyers at Artisi will benefit from enhanced protection when buying a new home as registered developers must adhere to the additional regulations set by NHQB. To find out more, visit fabrica.co.uk/new-homes-quality-board

A JOINT DEVELOPMENT BY



A residential development by A2Dominion Developments Ltd and London Borough of Hammersmith & Fulham on behalf of West King Street Renewal LLP (Company Number OC430982).

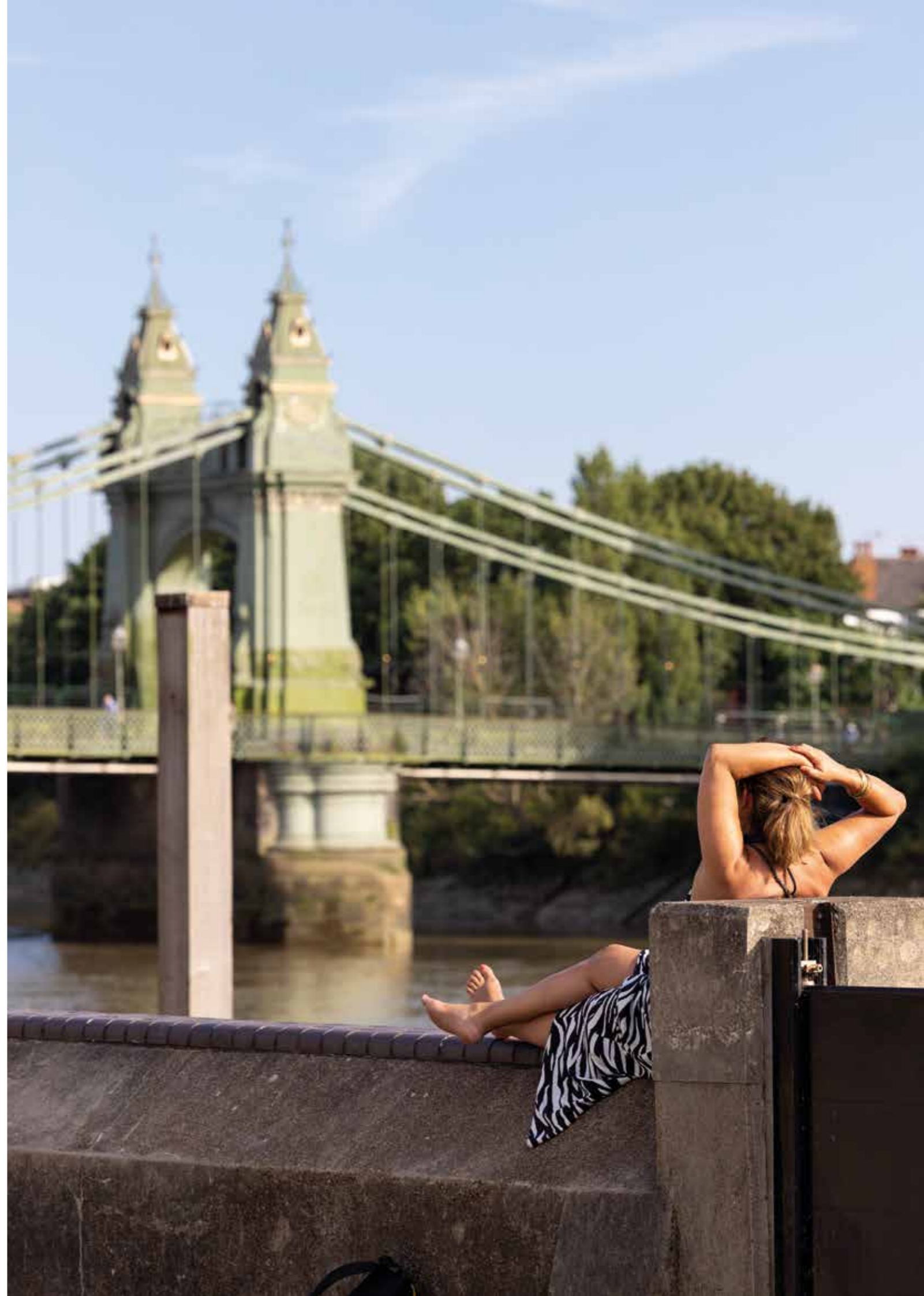
The information in this document has been prepared solely for the purpose of providing general information about Artisi. FABRICA by A2Dominion and its agents have taken care to ensure that the information is accurate at the time of its inclusion in this brochure, but does not guarantee the accuracy or completeness and shall not be liable for any loss or damage which may arise from reliance on the information.

All illustrations and computer generated images (CGI) reflect the artists' interpretation of the project and do not take into account the neighbouring buildings, physical structures, streets and landscape. Computer generated images are for indicative purposes only. The developers reserve the right to make modifications to the overall plans of Artisi, changes to architectural and interior features and finishes, brands, colours, materials, building design, specifications, ceiling heights, flooring patterns and floorplans without notification. Floorplates are for illustration of layouts only and are not to scale. Planting on the balconies and terraces are indicative only and does not form part of the standard specification. Plans for Civic Campus and public realm are still being evolved, site plan and landscaping shown are for indicative purposes only.

FABRICA by A2Dominion is a brand name used by A2Dominion Housing Group Ltd (an exempt charity registered under the Co-operative & Community Benefit Societies Act 2014. Soc no. 28985R, RCA Reg. L4240) and its subsidiaries.

Registered Office: 113 Uxbridge Road, Ealing, London W5 5TL

© 2024 A2Dominion Housing Group Ltd
Information correct as of April 2024





C I V I C
C A M P U S
HAMMERSMITH & FULHAM

A JOINT DEVELOPMENT BY

FABRICA
by A2Dominion

h&f
hammersmith & fulham